

Santa Barbara

MAGAZINE

ALL ABOUT FALL

TATJANA PATITZ AT LOTUSLAND
JEFF BRIDGES STRIKES A NEW NOTE
THE SANTA YNEZ SCENE
PLUS THE BUZZ ON LOCAL WINES

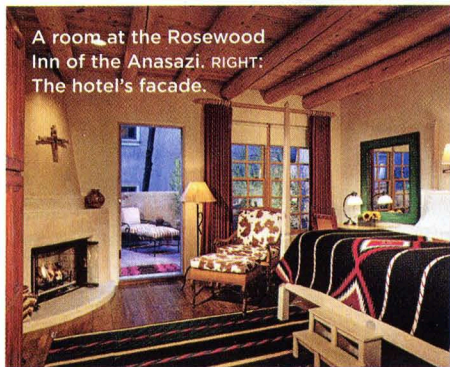


Seductive Southwest

LOCATED IN THE FOOTHILLS of the Sangre de Cristo Mountains, Santa Fe, New Mexico, is defined by its flat-roofed adobes, rich history, celebrated arts and crafts district along Canyon Road, year-round Santa Fe Railyard farmers market, and peppery cuisine. Direct flights from Los Angeles touch down at the quaint Santa Fe Municipal Airport, and a quick drive into town takes you to the **Rosewood Inn of the Anasazi**, just a few steps from the lively plaza district. Contemporary local art pops on the sandstone walls of the hostelry—named for ancient Native Americans of the area—and rooms are appointed with handcrafted furniture and kiva fireplaces. Executive chef Oliver Ridgeway whips up seasonal fare—such as the nine spice beef tenderloin with coffee-piñon glaze—at the inn’s Anasazi Restaurant. Stroll across the street from the hotel to peruse handmade turquoise jewelry, or explore the

art galleries surrounding the square. Modeled after a traditional Japanese *onsen*, the nearby spa Ten Thousand Waves, tenthousandwaves.com, offers a tranquil escape with therapeutic massages and skin treatments. For an aerial view of the surrounding landscape, board a Southwest Safaris, southwestsafaris.com, Cessna to experience a tour of the region. —KATRIN WANBERG

ROSEWOOD INN OF THE ANASAZI 113
Washington Ave., Santa Fe, NM, 505-988-
3030, innoftheanasazi.com. Rates: From \$335.



A room at the Rosewood Inn of the Anasazi. RIGHT: The hotel's facade.

