

Rosewood Sand Hill Art Compendium

Main Entrance:



1. **Yvette Molina**
Bough, 2008
Oil on aluminum

Artist's Residence: Oakland, CA
Represented by: Johansson Projects (510) 444.9140
2300 Telegraph Avenue, Oakland, CA 94612
www.johanssonprojects.com

A "Bough" is by definition a branch of a tree or more specifically the main branch. This Old English word accurately describes Yvette Molina's painting on aluminum. Molina paints with the precision and curiosity of an 18th Century botanist. Her "portraits" of various plants and flowers come primarily from her own garden and immediate neighborhood in Oakland, California, where she lives and works. Yvette Molina's saturated paintings of hazy forest-scapes document their uncanny energy and fragility. Multiple layers of oil paint and transparent glaze are used to create luminous meditations of far away lands.



2. **Robin Hill**

Qualitative Circle Series I-VII, 2008

Cyanotype on paper

Artist's Residence: Woodland, CA and Cape Breton, Nova Scotia
Represented by: Don Soker Contemporary Art (415) 291.0966
49 Geary Street, 4th Floor, San Francisco, CA 94108
www.donsokergallery.com

This collection of overlapping lines was created by *chance* in the artist's studio. Hill placed a stencil/matrix upon sensitized paper and exposed the image to ultraviolet light, permanently capturing the forms on paper. She regards the resulting line drawings as distillations of more fully evolved life-forms or genetic codes. A cyanotype is the photographic printing process the artist used to capture the lines on paper in cyan-blue. The qualitative circles were then glued to 300 lb. cold-pressed Saunders Waterford paper.



3. **Teo Gonzalez**

Untitled #446, 2007

Acrylic on canvas

Artist's Residence: Brooklyn, NY
Represented by: Brian Gross Fine Art (415) 788.1050
49 Geary Street, 5th Floor
San Francisco, CA 94108
www.briangrossfineart.com

Teo Gonzalez' works with geometric patterns, lines and pre-established measurements. He allows the predictability and chance of chemical reactions under different conditions to determine the visual surface of each painting. In this particular piece, Gonzalez utilized droplets of 22 karat gold on a turquoise background to create this organic grid.

Library / Restaurant Entrance:



4. **Jim Isermann**

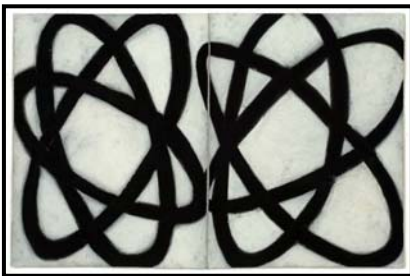
Kump, 2009

Vacuum-formed polystyrene

Artist's Residence: Los Angeles, CA

Contact: www.jimisermann.com

Jim Isermann's 3-dimensional wall mural in the library stairwell is entitled Kump after the architect Ernest J. Kump. Kump was an internationally recognized master of college campus planning and design. He was a spokesman for modern architecture and won several prestigious awards for his modular building designs in the Palo Alto area in the 1960s. Drawing inspiration from this same Modernist tradition, artist Jim Isermann created an intricate wall installation utilizing three modular shapes. The undulating mural consists of 216 vacuum-formed polystyrene panels arranged in an "algorithmic pattern". Each piece has been carefully installed according to this underlying mathematical formula or recipe, creating a complex sculptural work of art.



5. **Amy Kaufman**

Twins, 2008

Pastel on paper

Artist's Residence: Berkeley, CA

Represented by: Traywick Contemporary (510) 527.1214

895 Colusa Ave., Berkeley, CA 94707

www.traywick.com

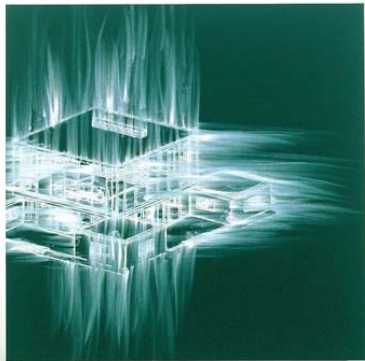
Amy Kaufman uses repetition of pattern and gesture to encourage the viewer to contemplate the subtle details that define her work. Minimalist in her approach, Kaufman presents abstracted natural forms in bold charcoal drawings. Graceful gestures of the hand are captured on paper through subtle marking in pastel. In Kaufman's work, careful attention is paid to scale and proportion inviting the image to extend far beyond the edges of the paper.



6. **Yvette Molina**
Nicotiana Seeding III, 2008
Oil on aluminum

Artist's Residence: Oakland, CA
Represented by: Johansson Projects (510) 444.9140
2300 Telegraph Avenue, Oakland, CA 94612
www.johanssonprojects.com

Yvette Molina also painted Bough in the Reception Lobby. Nicotiana is an ornamental sweet smelling flower indigenous to North and South America. It is commonly referred to as the Tobacco Plant. Molina approaches paintings with the precision and curiosity of an 18th century botanist. Her "portraits" of various plants and flowers come primarily from her own garden and immediate neighborhood in Oakland, California, where she lives and works.



7. **Gary Simmons**
Four Corner Burst, 2007
Pigment and oil paint on canvas

Artist's Residence: New York, NY
Represented by: Anthony Meier Fine Arts (415) 351.1400
1969 California Street, San Francisco, CA 94109
www.anthonymeierfinearts.com

Gary Simmons, a New York artist who lived and studied in California, incorporates images of Philip Johnson's architectural designs in his large-scale site-specific wall drawings. In the Rosewood Sand Hill painting, Simmons focuses on a lesser-known Johnson design for a project in Big Sur that was never actually realized.



8. **Rex Ray**

Sticta, 2007

Collage on linen

Artist's Residence: San Francisco, CA

Represented by: Gallery 16 (415) 626.7495

501 Third Street, San Francisco, CA 94107

www.gallery16.com

Ray has an instinctual sense of composition and his color combinations are incredibly successful and unpredictable: yellow paired with pink, acid green with sky blue, and on and on. Although this large work on canvas is abstract, it is what Ray calls a landscape. They're not landscapes in the traditional sense instead they are highly abstracted botanicals. A line of imaginary plants rises from the bottom of the picture. The influence of Venetian glass, Mexican art and even German kitsch is easy to see in the canvas works. Ray has sealed these pieces in matte varnish allowing the character of the paper to show through.



9. **Janis Provisor**

Mainland China, 1994

Artist's Residence: New York, NY

Represented by: Crown Point Press (415) 974.6273

20 Hawthorne Street, San Francisco, CA 94105

www.crownpoint.com

Janis Provisor's said her work always comes "back to nature, internal, external, lumps and bumps, cells and twigs, and everything in between, pattern and accident together in one space, a lot like life for me." The artist travels frequently to China which was the inspiration for this print published at Crown Point Press in San Francisco.

Madera Restaurant:



10. **Ross Bleckner** (left to right)
Swinging Blue Door, Swinging Door, Beginners, Bonfire, 2007
Color sugarlift aquatint

Artist's Residence: New York, NY
Represented by: Paulson Press (510) 559.2088
1318 Tenth Street, Berkeley, CA 94710
www.paulsonpress.com

Ross Bleckner has long been concerned with addressing the elements of natural process in his work. Bleckner visited Paulson Press for the third time in 2007. The resulting prints represent a shift from his previous abstract imagery to more representational forms that might be found in the garden. The artist utilized layers of color to achieve a quality of light further defining the recognizable leaf imagery.



11. **Ron Cooper**
Pattern Recognition, 2009
3 Dimensional Wooden Sculpture

Artist's Residence: Sebastopol, CA
Represented by: Smith Andersen (650) 327.7762
440 Pepper Ave, Palo Alto, CA 94306
www.smithandersen.com

"Pattern Recognition" is composed of old foundry patterns or molds the artist collected and re-presented in a new way. Many of the forms are familiar objects that invite further investigation. This sculptural wall relief consists of all recycled materials, with the exception of the backing and hardware. Some of the patterns date from the early 1900s and come from various sources including foundries in San Francisco, San Jose, and the studio of a well known pattern-maker Mr. H. Shwartz. The various moulds were sanded to reveal the wooden color beneath. The piece was finished with a walnut stain and clear satin urethane.



12. **Nathan Oliveira**

Bird, 2007

Color drypoint, sugar lift, spitbite aquatint with etching

Artist's Residence: Palo Alto, CA

Represented by: Crown Point Press (415) 974.6273
20 Hawthorne Street, San Francisco, CA 94105

www.crownpoint.com

Nathan Oliveira was a Professor of Studio Arts at Stanford University from 1964-1996. He is an accomplished painter who has lived in the Bay Area his entire life. In Bird, a large drypoint bird is perched on a delicate branch. Oliveira has long explored the relationships between humans and animals, often drawing animal heads over human profiles. The bird's head is in profile while its body faces the viewer, giving it the air of an ancient Egyptian deity.



13. **Amy Kaufman**

Berlin I & Berlin II, 2008

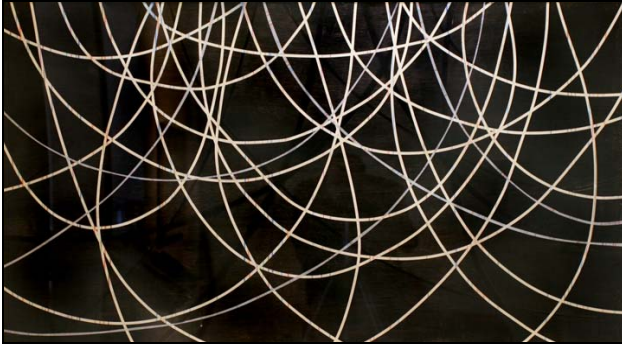
Conte on paper

Artist's Residence: Berkeley, CA

Represented by: Traywick Contemporary (510) 527.1214
895 Colusa Ave., Berkeley, CA 94707

www.traywick.com

See # 5 - Amy Kaufman



14. Leo Bersamina

Flow Then Capture, 2008

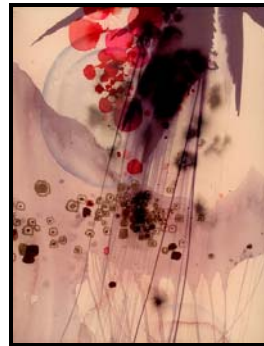
Acrylic & Wax on paper

Artist's Residence: San Rafael, CA

Represented by: Gallery Paule Anglim (415) 433.2710
14 Geary Street, San Francisco, CA 94108

www.gallerypauleanglim.com

Leo Bersamina was born in San Francisco, CA and received his MFA in Painting from Yale School of Art in 2000. Bersamina incorporates both painting and photography into his work which are explorations of pattern, color, transparency and reflection. They are highly inventive representations of vaguely familiar images taken from personal history and memory.



15. Darren Waterston (left to right)

Mount Verna with Wound, 2008 / Disembodiment Study, 2008

St. Clair, 2008

Pigment-based prints

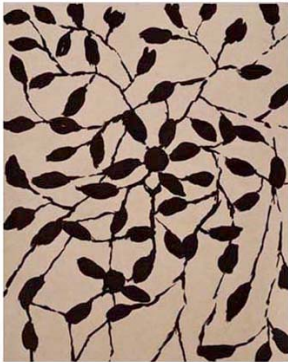
Artist's Residence: San Francisco, CA

Represented by: Gallery 16 (415) 626.7495
501 Third Street, San Francisco, CA 94107

www.gallery16.com

Darren Waterston paints in an "old master" style utilizing many different paint materials including traditional oil pigments, encaustics, varnishes, tree saps and plant resins, as well as acidic materials which eat through the glazing to expose previously painted surfaces below. His knowledge of traditional painting has informed his print making ability as well, infusing the work with a well-crafted quality even though the surface may appear aged or timeworn. The inspiration for much of his work comes from the artist's interest in science, widely varied religious and philosophical beliefs (both Eastern and Western), and a romantic feel for the history of painting.

Main Level Meeting Rooms:



16. **Ross Bleckner**

At Present, 2007

Color sugarlift aquatint

Artist's Residence:

Represented by:

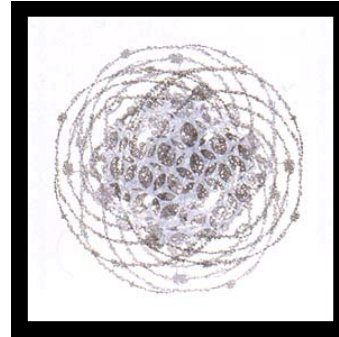
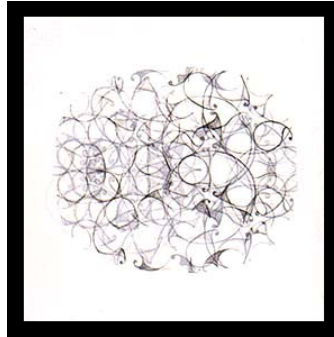
New York, NY

Paulson Press (510) 559.2088

1318 Tenth Street, Berkeley, CA 94710

www.paulsonpress.com

See # 10 – Ross Bleckner



17. **John Morris**

Simula, Self, & Cluster, 2003

Chine colle lithograph

Artist's Residence:

Represented by:

New York, NY

Tamarind Institute (505) 277.3791

108-110 Cornell Dr. SE, Albuquerque, NM 87106

www.tamarind.unm.edu

Morris's images are formed from repetitious marks such as circles, lines, webs and grids and create patterns that evoke both manmade and natural phenomena, from molecular biology to electronic circuitry. The drawings vary from bare-bones composition to extravagant visual layers.



18. **Anne Appleby**

Waters #6, 1991

Oil on canvas

Artist's Residence: Jefferson City, MT
Represented by: Gallery Paule Anglim (415) 433.2710
14 Geary Street, San Francisco, CA 94108
www.gallerypauleanglim.com

Although Appleby's paintings are composed of abstract panels, each essentially a single color, she thinks of them as landscapes. She selects a particular plant or element found in nature and captures the spectrum of color found in that object in one representation painting. Appleby paints glowing fields of color that seem as alive as the plants and nature she studies. Ann Appleby has a M.F.A in painting from the San Francisco Art Institute and lived in the Bay Area for many years before moving to Montana.



19. **Marti Somers**

Circles & Flowers #1, 2008

Mixed media on paper

Artist's Residence: San Carlos, CA
Information: www.martisomers.com

Marti's works explore the subject of nature. Her whimsical drawings appear like icing on a cake. Much of her inspiration comes from living near the coast in northern California. Marti Somers worked as a Graphic Designer for Stanford University from 1985-1993. Shortly after, she made the decision to commit to painting and pursue her dreams as an artist.



20. **Sara Cole**

Underneath I, II, III, 2008

Gouache and coffee on paper

Artist's Residence: San Jose, CA

Represented by: Bryant Street Gallery (650) 321-8155

532 Bryant Street, Palo Alto, CA 94301

www.bryantstreet.com

Sara Cole's works on paper are a combination of abstract and figurative forms. Silhouettes of plant roots and flowers overlap one another illustrating the transitory nature of living organisms. These stained compositions portray the artist's interest in transformation, from living to dying and from dying to regeneration. Cole received her M.F.A. from San Jose State University.

Lower Level Foyer / Ballroom:



21. **David McDonald**

Bitches Brew #4, 2007

Acrylic, joint compound, wax on wood panel

Artist's Residence: Los Angeles, CA

Represented by: Traywick Contemporary (510) 527.1214

895 Colusa Ave., Berkeley, CA 94707

www.traywick.com

Primarily a sculpturist, David McDonald's work remains solidly rooted in a few fundamentals: color, texture, scale and medium. The artist frequently utilizes building materials like joint compound in his artwork to add surface interest and texture. He approached painting with the eye of a sculptor and constructs 3-dimensional, architectural spaces with color.



22. **David Hannah**
Approximate Landscape #1, 2006
Ink, oil and acrylic on canvas

Artist's Residence: San Francisco, CA
Represented by: Gallery Paule Anglim (415) 433.2710
14 Geary Street, San Francisco, CA 94108
www.gallerypauleanglim.com

David Hannah directed the Graduate Program in Art at Stanford University from 1991 to 2007 and is currently a Professor Emeritus. A Texas native, Hannah's work has been exhibited nationally. He earned his Master's degree from San Francisco Art Institute and was awarded a National Endowment for the Arts grant in 1975. His vibrant landscapes are filled with pattern and texture.



- 23 - 24. **Laura Dufort** (*left to right*)
Abiding in the Here and Now I, 2008
Abiding in the Here and Now II, 2008
Acrylic on canvas

Artist's Residence: San Francisco, CA
Represented by: Gallery Paule Anglim (415) 433.2710
14 Geary Street, San Francisco, CA 94108
www.gallerypauleanglim.com

These silvery white paintings have a simple elegance. Circles of color float over a radiant ground creating a sense of space and emptiness. A student of Eastern religion, Dufort refers to these circular shapes as floating mandalas. Laura Dufort teaches art at the California College of Art in San Francisco where she received her MFA several years ago.

Lower Prefunction & Meeting Rooms:



25. **Julie Chang**
Both Forgotten, 2008
Acrylic on panel

Artist's Residence: San Francisco, CA
Represented by: Hosfelt Gallery (415) 495.5454
430 Clementina Street, San Francisco, CA 94103
www.hosfeltgallery.com

Julie Chang's paintings intertwine traditional Chinese textile design, European wallpaper patterns, and contemporary graphic design with recycled imagery from old family photos and popular culture. These two painting were included in an exhibition exploring Chang's personal path to enlightenment. Julie Chang received her MFA from Stanford University in 2007, her BA in Sociology from Tufts University and her BFA in Studio Art from the School of the Museum of Fine Arts in 1999.



26. **Julie Chang**
Reaching the Source, 2008
Acrylic on panel

Artist's Residence: San Francisco, CA
Represented by: Hosfelt Gallery (415) 495.5454
430 Clementina Street, San Francisco, CA 94103
www.hosfeltgallery.com

See # 25 - Julie Chang



27. **Kathryn Van Dyke**

Earthbound/Airborne 2, 2008

Acrylic, graphite and oil on canvas

Artist's Residence: Sausalito, CA

Represented by: Stephen Wirtz Gallery (415) 433.6879
49 Geary Street, 3rd Floor, San Francisco, CA 94108

www.wirtzgallery.com

Geometric forms resembling faceted crystalline structures are suspended within a web of intersecting graphite lines punctuated by small dots of color. These gemlike forms mysteriously appear from the supporting network. Kathryn Van Dyke received her M.F.A. from Yale School of Art in 1993, her B.F.A. in 1990 from California College of Arts and Crafts, and her B.A. from the University of California, Berkeley.



28. **Dean Smith**

Topology #20 (conduction), 2006

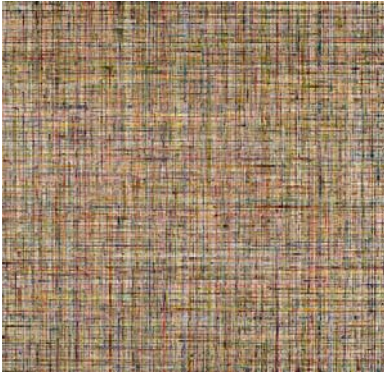
Metallic ink on paper

Artist's Residence: Berkeley, CA

Represented by: Gallery Paule Anglim (415) 433.2710
14 Geary Street, San Francisco, CA 94108

www.gallerypauleanglim.com

Dean Smith produces drawings that are abstract in nature yet make reference to organic growth and the representation of a 3-dimensional space. His work is a delicate composition made up of tiny lines, so fine and regimented in their perfect repetition, it seems impossible they were produced by hand. These meticulous thin marking in fluorescent pen appear to breathe on their own, living somewhere between geometry and botany. Dean Smith received his M.F.A. from the University of California, Berkeley.



29. **Josh Dov**

Ether, 2007

Acrylic on canvas

Artwork Location: Los Angeles, CA

Represented by: Brian Gross Fine Art (415) 788.1050

49 Geary Street, 5th Floor

San Francisco, CA 94108

www.briangrossfineart.com

Josh Dov is known for his structured paintings based on the grid. He gradually builds a framework of interwoven horizontal and vertical lines crisscrossing the surface of the canvas. Focusing on subtle yet numerous color shifts, the painting vibrates with lush variations of magenta, green, and blue. Through carefully considered variations in pressure, the artist paints crisscrossing lines working with nibs of varying sizes. The end result is rhythmic and full of motion.



30. **Aaron Petersen**

Anchor, 2006

Oil on aluminum

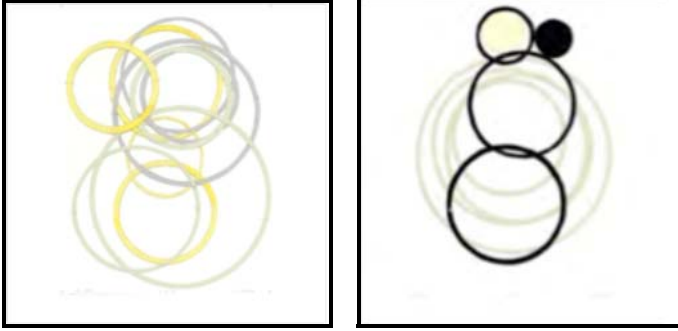
Artist's Residence: San Francisco, CA

Represented by: Braunstein/Quay Gallery (415) 278.9850

430 Clementina, San Francisco, CA 94103

www.bquayartgallery.com

Aaron Petersen is a graduate of the California College of Arts in San Francisco. His paintings on 3" deep aluminum panel combine areas of dense medium with veils of dripping color. "It is my version of our environment, invisible energies collide with imperceptible natural forces to form abstract movements of paint" states Petersen. Hovering between chaos and control, the artist presents diaphanous forms suspended in space.



31. **Susan Ulrich**
No. 1487 & No.1499, 2005
 Collage on paper

Artist's Residence: Boston, MA
Represented by: Kathryn Markel Fine Arts (212) 366.5368
 529 West 20th, Suite 6W, New York, NY, 10011
www.markelfinearts.com

Suzanne Ulrich traces the influences on her work back to Matisse, Richard Diebenkorn, and Jasper Johns. These collages emphasize color and composition. The artist uses timeworn paper and re-presents them as simple geometric shapes. Some of the paper is painted over with gauche or pastel and then combined in austere, orderly patchwork design.



32. **Chad Buck**
Salt, 2005
 Oil on linen

Artist's Residence: Oakland, CA
Represented by: Brian Gross Fine Art (415) 788.1050
 49 Geary Street, 5th Floor, San Francisco, CA 94108
www.briangrossfineart.com

Painter Chad Buck places emphasis on sublime color and texture in his reductive abstractions. Buck thoughtfully considers the textural properties of various media, which he combines to achieve unique physical and material color. Buck's reductive paintings are extraordinarily contemplative and reflect a powerful minimalist aesthetic.



33. **Matt Phillips**
Flags, 2000
Monoprint

Artist's Residence: Emeryville, CA
Represented by: Smith Andersen Editions (650) 327.7762
440 Pepper Ave, Palo Alto, CA 94306
www.smithandersen.com

A painter and a poet, Matt Phillips has worked closely with Smith Andersen Editions over the years to perfect his mastery of the print making process. Smith Andersen Editions is a small fine arts press established in Palo Alto, CA in 1969. Phillips merges figural and abstract traditions in his brightly colored work. With their strong sense of rhythm, shape and beauty, his monotypes are pleasing and celebratory.



34. **Robert Buelteman**
Vanishing Ship/ John Roloff & Hai/ Andreas Straub, 1995; printed 2008
Limited Edition Silver Gelatin Print

Artist's Residence: Montara, CA
Represented by: Robert Buelteman Studio (650) 728.1010
PO Box 371239, Montara, CA 94037
www.buelteman.com

The photos of the Djerassi Ranch, home to the Djerassi Resident Artists Program, capture the wild beauty of its setting in the hills of Woodside, California. The use of a miniature camera and infrared-sensitive film allowed the photographer to experiment both technically and philosophically, a departure he says he never would have made without the support of the program.



35. **Chad Buck**
Slip & Dissipate I-VI, 1996
 Oil encaustic on Lanaquarelle watercolor paper
Artist's Residence: Oakland, CA
Represented by: Brian Gross Fine Art (415) 788.1050
 49 Geary Street, 5th Floor, San Francisco, CA 94108
www.briangrossfineart.com

See # 32 – Chad Buck

Sense Spa:



36. **Benicia Gantner**
Sun, Stream & Circle, 2009
 Vinyl collage on acrylic panel
Artist's Residence: San Francisco, CA
Represented by: Traywick Contemporary (510) 527.1214
 895 Colusa Ave., Berkeley, CA 94707
www.traywick.com

The artwork on display at Sense, A Rosewood Spa, by Benicia Gantner, was commissioned specifically for the space. Gantner's reductive landscapes are rooted in nature. Each piece captures a flattened, simplified space, saturated with color and populated with both abstract and recognizable organic forms. These imagined spaces are like flashes of a dream, or déjà vu—both familiar and alien. They are all based upon the artist's observation of the natural world and the drive to conjure new and exciting spaces for exploration. The artist states that "by using industrial or man-made materials like acrylic and vinyl, I reinforce the idea that our experience of the natural world is infused with artifice and largely synthesized. I splice and graft organic forms together, creating new hybrid forms, and render natural structures that balance precariously in delicate symbiosis."



37-38. Robert Buelteman

Double L Eccentric Gyrotory/George Rickey; Sylvan Steps/David Nash;
Untitled/Mauro Staccioli, 1996 / printed 2008

Limited Edition Silver Gelatin Print

Artist's Residence: Montara, CA

Represented by: Robert Buelteman Studio (650) 728.1010
PO Box 371239, Montara, CA 94037

www.buelteman.com

See #34 - Robert Buelteman

Fitness Center:



39. Robert Buelteman

Redwood Ridge, printed 2008

Limited Edition Silver Gelatin Print

Artist's Residence: Montara, CA

Represented by: Robert Buelteman Studio (650) 728.1010
PO Box 371239, Montara, CA 94037

www.buelteman.com

See #34 - Robert Buelteman

Juice Bar:



40. **Deborah Oropallo**

Trace, 1999

Color Aquatint Etching

Artist's Residence: Berkeley, CA

Represented by: Paulson Press (510) 559.2088
1318 Tenth Street, Berkeley, CA 94710

www.paulsonpress.com

Deborah Oropallo appropriates images from everyday life creating evocative symbols suburban home life. Trace is the compilation of several overlapping ovals containing lush greenery and patters reminiscent of enlarged screen mesh. The leaf imagery was taken from ivy growing in the artist's own backyard. In reaching back to familiar imagery, the artist captures the feeling of a familiar backyard and the security of home.

Beauty Salon:



41. **Amy Kaufman**

Artichoke I & II, 2007

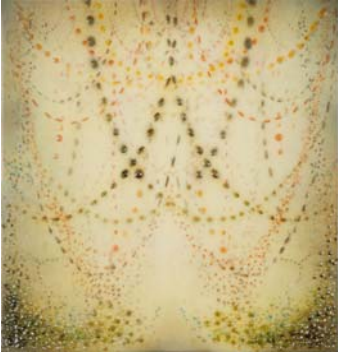
Conte on paper

Artist's Residence: Berkeley, CA

Represented by: Traywick Contemporary (510) 527.1214
895 Colusa Ave., Berkeley, CA 94707

www.traywick.com

See # 5 - Amy Kaufman



42. Michelle Mansour

Collapse, Visitation, 2008

Acrylic, ink, and silicone on muslin on panel

Artist's Residence: Oakland, CA

Represented by: Root Division

3175 17th Street

San Francisco, CA 94110

www.michellemansour.com

Michelle Mansour's paintings are meticulously crafted layers of translucent acrylic and built up relief surfaces with ink & silicone. These paintings explore the tension between organic fluidity and manipulated texture. The artist uses this combination of techniques to speak about the tension between what we can and cannot control.



43. Michelle Mansour

Adapt & As It Is, 2008

Acrylic, ink, and silicone on muslin on panel

Artist's Residence: Oakland, CA

Represented by: Root Division

3175 17th Street

San Francisco, CA 94110

www.michellemansour.com

See # 42 – Michelle Mansour



44. **Benicia Gantner**
Field Study, 2006
Vinyl collage on acrylic panel

Artist's Residence:
Represented by:

San Francisco, CA
Traywick Contemporary (510) 527.1214
895 Colusa Ave., Berkeley, CA 94707
www.traywick.com

See # 36 – Benicia Gantner



45. **Benicia Gantner**
Firelight 4, 2008
Vinyl collage on paper

Artist's Residence:
Represented by:

San Francisco, CA
Traywick Contemporary (510) 527.1214
895 Colusa Ave., Berkeley, CA 94707
www.traywick.com

See # 36 – Benicia Gantner



46. **Hung Liu**

La Ran: Pomegranate, 2003

Color aquatint etching

Artist's Residence:

Oakland, CA

Represented by:

Paulson Press (510) 559.2088

1318 Tenth Street, Berkeley, CA 94710

www.paulsonpress.com

La Ran is a direct reference to Chinese batik, a wax-resist dyeing technique used on textiles. The pomegranate flower is the dominant coral pattern behind the young woman. Liu has affixed a cinnabar mirror, ceramic figurine, and a glass bottle as allegories to Chinese history and tradition. Hung Liu currently teaches at Mills College in Oakland, CA.

Outdoor Pool Cabana:



47. **Enrique Chagoya**

Fortune (Red), 2005

Monoprint

Artist's Residence:

San Francisco, CA

Represented by:

Segura Press, Tempe AZ (480) 894-0551

Gallery Paule Anglim (415) 433.2710

14 Geary Street, San Francisco, CA 94108

www.gallerypauleanglim.com

Born in Mexico City, Enrique Chagoya moved to the U.S. in 1979 after studying political economics in college. He settled in the Bay Area, earned a Master's in fine arts at UC Berkeley and has been teaching art at Stanford University since 1995. Chagoya's paintings and drawings frequently reference cartoons and have a grisly, comedic edge. As an allegory for life's challenges, the artist illustrates two feet balanced atop a ball with an optimistic promise of *Fortune* below.



48. **Chad Buck**
Faultline I, 2004
Serigraph

Artist's Residence:
Represented by:

Oakland, CA
Brian Gross Fine Art (415) 788.1050
49 Geary Street, 5th Fl, San Francisco, CA 94108
www.briangrossfineart.com

See # 32 – Chad Buck