

ROSEWOOD

HONG KONG

HOTEL FACT SHEET



About

The 413-room Rosewood Hong Kong is located in the heart of the Victoria Dockside arts and design district on the glimmering harbourfront in Tsim Sha Tsui, celebrating the area's role as Hong Kong's new creative and cultural epicentre. The hotel occupies 43 floors of the multi-use Rosewood Tower, a new landmark on the world-famous skyline.

Eleven bars and restaurants are complemented by recreational facilities including Rosewood Explorers Club for little guests, and a 25-metre-long outdoor infinity pool in Asaya, Rosewood's holistic wellness concept. The Manor Club executive lounge provides exclusive privileges while The Pavilion, the brand's signature residential-style meeting and function space, hosts corporate events, conferences and social celebrations. The 186 ultra-luxury Rosewood Residences have been designed for residents electing short and longer stay rentals, with a dedicated private club, along with special services and dedicated amenities.



ROSEWOOD HONG KONG

VICTORIA DOCKSIDE, 18 SALISBURY ROAD, TSIM SHA TSUI, KOWLOON, HONG KONG

T. +852 3891 8888 F. +852 3891 8000 rosewoodhotels.com

An homage to Rosewood's origins as an aristocratic manor, hospitality designer Tony Chi of New York studio tonychi has conceived the entire hotel as a "vertical estate" which incorporates significant green spaces and outdoor areas throughout, creating openness and room to breathe as a defining element of the Rosewood Hong Kong guest journey. Rosewood Hong Kong embraces the brand's A Sense of Place® philosophy to reflect the individual location's history, culture and sensibilities.

Location

Conveniently situated on the Kowloon harbour front, on a historic site where the city's future as a global trading hub was first established, and framed within the ambitious landmark of Victoria Dockside arts, culture and luxury retail district, the hotel is connected to Hong Kong Island by fast, convenient water, road, MTR, water taxi and Star Ferry transfers.

- Direct link to East Tsim Sha Tsui MTR station
- Star Ferry: 5-minute walk
- China Ferry Terminal: 3 minutes by car
- Kai Tak Cruise Terminal: 20 minutes by car
- Airport Express: 10 minutes by car
- Airport: 30 minutes by car



Accommodation

The ultimate in refined comfort and sophisticated residential luxury, the 413-room Rosewood Hong Kong invites guests to escape to the rarefied world of the vertical estate. Among the most spacious in Hong Kong, the hotel's accommodations feature luminous harbour views, with a total of 91 suites enhanced by personalised butler service and Manor Club access, 18 of which are standout Signature Suites.

The leading exemplar of ultra-luxury residential-style hospitality in the city, Rosewood Hong Kong's Harbour House is the ultimate expression of exclusive residential luxury. Occupying 1,150 sq. m. on the 57 storey of Rosewood Hong Kong, the Harbour House Floor overlooks Victoria Harbour, with a 13-metre outdoor lap pool, wraparound landscaped gardens and magnificent wraparound harbour views.



Arriving via a private elevator and dedicated foyer, this expandable single-storey suite offsets the formality of interior accents, including lacquer cabinetry and lavish detailing, with curated contemporary works of art. The private bar caters to this opulently expansive home setting, with spacious living areas which also include a library/study, stylish dining room and an occasional kitchen and guest powder room. The Harbour House is also consisted of a state-of-the-art private gym, creating a self-contained private retreat in this two in suite master bedroom and three bedrooms, ultra-luxury home.



This opulently expansive home setting features spacious living and dining rooms and an occasional kitchen, as well as a stunningly handsome master bedroom, offering a dedicated walk-in dressing room and butter soft, leather-wrapped cabinetry. In the master bathroom with its standout harbour views, soaring ceiling floor to ceiling windows, and a stunning circular soaking tub hewn from a single slab of marble add tasteful flair, with twin walk-in rain showers and waterfall features, his-and-her vanities, and independent, twin heated washlets.



Dining

Rosewood Hong Kong's eleven bars and restaurants celebrate the city's vibrant dining scene and create an exciting new gastronomic hub in Kowloon through a series of unique concepts, each reflecting the independent spirit of Rosewood's innovative approach to intimate, lively dining, and echoing the brand's A Sense of Place® philosophy.

Holt's Café provides an upscale and contemporary take on Hong Kong's traditional Cha Chaan Teng dining culture with comforting local and international favourites in a stylish parlour, as well as a traditional high-end tea retail in Tea Conservatory.

The Butterfly Room is an elegant tea lounge offers a glamorous afternoon tea experience, featuring a contemporary selection of refined savory bites, exquisite sandwiches, and warm scones, complemented by artful pastries and delicate confections.



Butterfly Patisserie and its online shop showcase signature chocolates, luscious and creative cakes and seasonal specialties in a high jewellery atelier inspired setting.

DarkSide, ranked No. 17 in ‘Asia’s 50 Best Bars 2024’, is a sophisticated, timeless celebration of rare aged spirits and confident classic cocktails complemented by sultry live jazz. The concise cocktail list pays homage to Kowloon’s “Dark Side” moniker and focuses on time-honoured traditions updated with innovative techniques.

XX represents the pinnacle of excellence and exclusivity, where every aspect of the bar is meticulously designed to provide an unmatched luxury experience. The bar offers a curated collection of exquisite whiskies, fine wines, seasonal cocktails crafted by expert mixologists, and a selection of the finest cigars. The decorated space is adorned with antique mirrored tables and plush velvet couches, creating the perfect ambiance for unwinding and reconnecting with friends.

The Legacy House, a MICHELIN One-Star and Black Pearl One Diamond restaurant, honours family heritage and pays homage to Dr. Cheng Yu-Tung, patriarch of the Cheng family who owns Rosewood Hotel Group. The family’s roots in Shunde, cradle of Cantonese cuisine in China’s Guangdong province, are reflected in the intricate traditional yet innovative cooking techniques that strike a delicate balance between taste and texture. There are also seven uniquely modern and art-filled private dining rooms, each modelled after a different landmark moment in Dr. Cheng Yu-Tung’s storied life.

Bayfare Social is a tapas-inspired gastro-market is a vibrant and fast-paced social eatery with a high-quality menu that celebrates pristine ingredients, providing a chic and casual setting for groups of colleagues, friends or family to come together for a leisurely lunch, or pre-dinner drinks and light all-day dining in polished, warm and welcoming surrounds.

CHAAT, a MICHELIN One-Star and Black Pearl One Diamond restaurant, brings the delicious street food and homemade classics of India to your table, delivering authentic flavours reimagined and elevated for a modern setting. CHAAT, in Hindi, means “to lick” and invite guest to transport themselves across the country with a menu from which they will savour every last morsel. Vibrant décor, gilded bronze accents and a custom-made mural by the Hyderabad contemporary artist



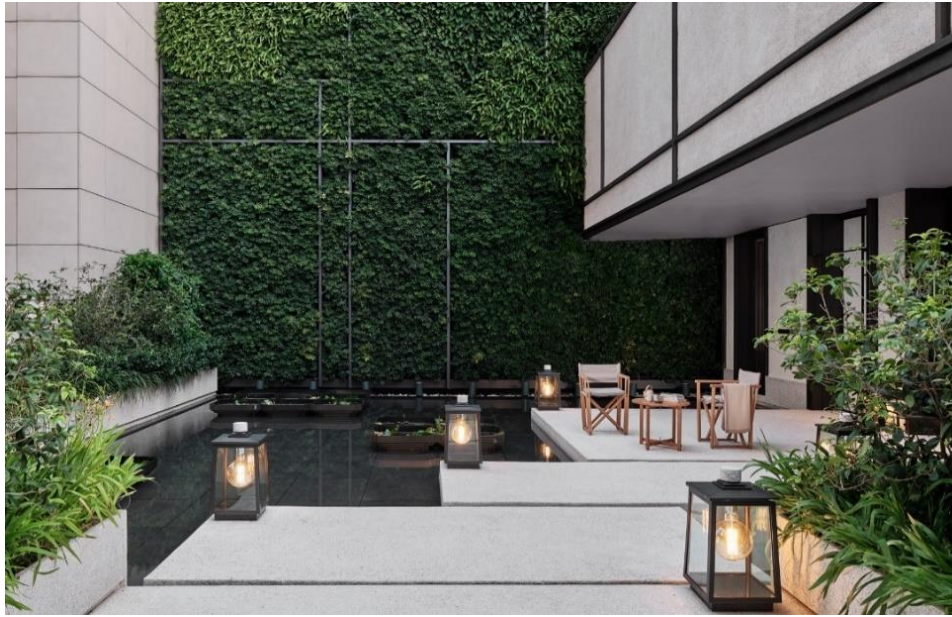
Kandi Narsimlu bring the intoxicating energy, vibe and social scene of the bustling Indian marketplace to life for a dining experience unlike any other.

HENRY reimagines the traditional grill experience with a modern, ingredient-led approach that transcends the classic steakhouse. In our open kitchen, premium meats, seafood, and seasonal vegetables are expertly grilled in open fire and over charcoal grills. At the bar, rare whiskies, aged spirits, fine wines, and crafted cocktails take centre stage, while our butcher's corner offers dry-aged heritage cuts, prepared with precision and care. With a menu showcasing only the finest-quality ingredients and a space that blends finesse with warmth, HENRY is a celebration of fire and flavour.

BluHouse brings a taste of everyday life from the streets of Italy for its guests to immerse in an authentic Italian experience. Located on the Avenue of Stars with panoramic views of the famed Victoria Harbour and Hong Kong skyline, BluHouse's elegant and sun-filled casual dining hall is a stylish hub for gatherings. Inspired by the concept of "business with purpose", BluHouse is committed to co-creating neighbourhood resilience by supporting underserved and overlooked communities in its Tsim Sha Tsui neighbourhood. It is pledging 1% of its revenue towards supporting this mission.

Inspired by the timeless elegance of marble, **Marmo Bistro** invites guests to savour the beauty of classic French fare. Their seasonal menu highlights honest, carefully sourced ingredients—featuring the finest meats, freshest seafood, and a thoughtfully curated selection of exceptional wines. With the warmth of a neighbourhood bistro, Marmo is the perfect place to gather with friends and family around a cosy table.





Asaya Hong Kong

Asaya is an innovative, integrated wellness concept focused on harnessing the powers of self-acceptance, discovery and connection to foster personal sustained growth. Offering a carefully curated experience tailored to each guest, Asaya seeks to unlock unlimited possibilities for well-being and bring about long-lasting change. Building a community that brings together people of the same mindset and lifestyle, each Asaya destination is designed to resonate with the needs of local residents, offering alternative therapies and rituals, enriching fitness and mindfulness activities and lifestyle coaching, as well as specially designed spaces for relaxation and reflection.

In 2025, Asaya partners with the legendary Parisian beauty house Guerlain to introduce Asaya Spa by Guerlain— an elevated wellness experience, seamlessly blending beauty, artistry, and science to deliver transformative results. This collaboration with Guerlain further enhances Asaya’s mission by providing guests with the finest French skincare treatments and holistic wellness experiences, uniting expertise with indulgence to nurture the mind, body, and spirit.





Meetings & Events

Set on two floors, Rosewood Hong Kong’s event facilities reflect the refined spirit of the estate, offering 3,200 square metres of expansive meetings and event space enhanced by artfully landscaped gardens with immersive harbour views. Impressive venues include the 1,000-square-metre pillarless Grand Ballroom on Level Three, with a dramatic “skyfold” automated partition for versatility and retractable chandeliers; and four day-lit, multipurpose Galleries for meetings, The Gallery Kitchen for animated activations and the Victoria Suite.



On the fourth floor, The Pavilion offers 1,000 square metres of rarefied, high-residential style space, featuring the 300-square-metre Pavilion Hall with floor-to-ceiling windows and water views; three daylight multipurpose Salons, The Orangery with its own private terrace and superlative facilities; and the Belvedere Suite for elevated tastings. The Event Studio is a curated visual showcase of Rosewood Hong Kong’s extensive and distinguished event capabilities. Located on the sixth floor, Botanical Kitchen is a contemporary event space bathed in natural light. Featuring an open-plan kitchen and floor-to-ceiling windows, it creates a perfect blend of elegance and nature.



Hotel Contact

Tim Sedo

Director of Marketing and Communications

Telephone: +852 6659 6539

Email: tim.sedo@rosewoodhotels.com

Sylvia Wong

Senior Public Relations & Communications Manager

Telephone: +852 5239 9290

Email: sylvia.wong@rosewoodhotels.com

Susan Yang

Assistant Public Relations Manager - Greater China

Telephone: +852 3891 8386

Email: susan.jw.yang@rosewoodhotels.com

