

FOR MORE INFORMATION,
CORNICHE STREET, AL SHATIE DISTRICT, JEDDAH 23415, SAUDI ARABIA
TEL: +966 12 260 7111 | EMAIL: JEDDAH@ROSEWOODHOTELS.COM

www.rosewoodhotels.com/en/jeddah

روزوود جدة
ROSEWOOD
JEDDAH

ROSEWOOD JEDDAH

BUSINESS *is* PERSONAL



ROSEWOOD JEDDAH, is a flawless combination of spectacular design and unprecedented sophistication. The perfect stay for both the business and leisure traveler, this prestigious hotel is situated on the Jeddah Corniche, an impressive locale that runs parallel to the Red Sea for over 20 miles. A distinctively modern building, the property carries the influence of the city of Jeddah and traditions of the Kingdom in its architecture. In a landscape marked by contrast, where the desert meets the sea, the stunning Rosewood Jeddah redefines modern luxury, with its unparalleled elegance and thoughtful amenities.

ROOMS & SUITES

127

EVENTS SPACES

8

RESTAURANTS & LOUNGE

4

LOCATION

Setting the stage for high-powered business meetings and exceptional events, the personalised service of Rosewood Jeddah ensures every occasion is a resounding success. Located in the Al Shatiea District, the hotel within close proximity to major business districts & 25-minute drive from the airport making it extremely convenient for company occasions. From intimate business meetings to large-scale conferences, we excel at everything from floral design to venue set-up flexibility. Comprising of experienced professionals, we work around the clock to make every event unforgettable.

MEETINGS & EVENTS

With a seasoned team of professionals, elegant décor and advanced technology, Rosewood Jeddah offers the perfect backdrop for prestigious occasions. Ideally positioned for business meetings and gatherings, guests have a choice of 8 meeting spaces spread over 400 sqm including two meeting rooms and six boardrooms making every event an unforgettable one.

SERVICE

Magnify your meetings with the personalised, friendly and thoughtful service of Rosewood Jeddah. Ideal for smaller business events and high-level meetings, the hotel has 8 meeting spaces and boardrooms with a total of 469 square meters (about 5,050 sq. ft.) of event space. From menu tailoring to floral design and venue set-up flexibility, our experienced team of professionals reviews the venue prior to the event, remains on site to troubleshoot and liaises with the logistics team to exceed your expectations.

CUISINE

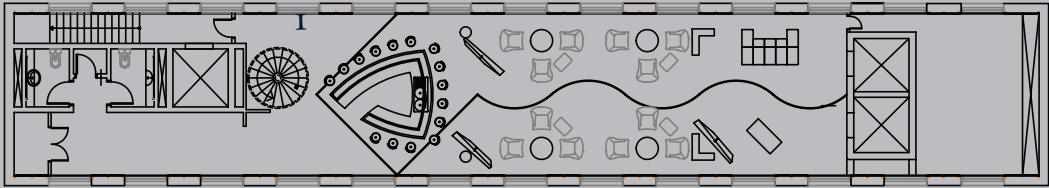
A popular and stylish destination for dining, the ultra-luxurious Rosewood Jeddah offers a rich selection of culinary options with its varied restaurants. Each dining experience is filled with sophistication and delicious delights and are must-haves when visiting Jeddah. Taste your way through the Asian flavors of Japan and China before savoring an international buffet of European dishes. Bringing some regional flair is our signature Middle Eastern restaurant that takes you back to the splendor of old Arabia.

CAPACITY CHART & FLOOR PLANS

	<i>sqm</i>	<i>size(m)</i>	<i>ceiling</i>	<i>reception</i>	<i>theatre</i>	<i>classroom</i>	<i>conference</i>	<i>u-shape</i>
AL HIJAZ	157.5x28.2	7.9	2.37	100	90	68	-	48
AL MALAKI LOUNGE	125	21.75x5.75	3.22	-	30	20	25	18
BOARDROOMS	-	-	-	-	-	-	-	-
AL FAIROUZ	31.12	6.87x6.24	2.33	-	-	-	10	-
DAREEN	31.12	6.87x6.24	2.33	-	-	-	10	-
NAJD	31.12	6.87x6.24	2.33	-	-	-	10	-
REMAL	31.12	6.87x6.24	2.33	-	-	-	10	-
AL JAAD	31.12	6.87x6.24	2.33	-	-	-	10	-
FARSAN	31.12	6.87x6.24	2.33	-	-	-	10	-

20TH FLOOR

Al Malaki Lounge is located on the 20th floor of the hotel with spectacular panoramic views of the Red Sea and Jeddah, the Al Malaki Lounge is a luxurious private meeting space that can accommodate up to 30 people. Equipped with a dedicated Meeting Butler to assist with dining services and administrative support.

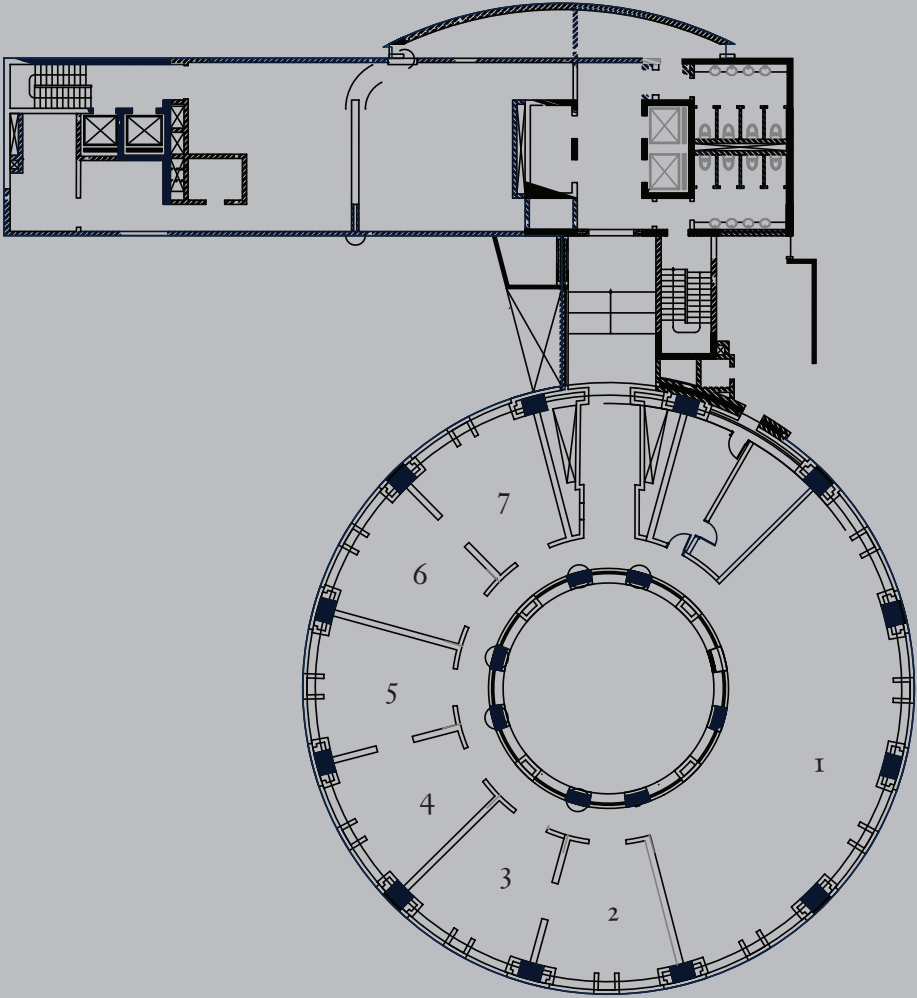


1 | AL MALAKI LOUNGE

3RD FLOOR

Al Hijaz Hall and the boardrooms are located on the 3rd floor of the hotel. Naturally light with beautiful views of the Red Sea, each boardroom space accommodates up to 10 persons while creating an inspiring environment for business.

Al Hijaz Hall, the biggest pillar-free and high-end meeting room in the hotel, serves up the perfect venue for grand meetings and private events. Accommodating up to 100 persons comfortably, discover a new way to entertain with Al Hijaz Hall's offerings.



1 | AL HIJAZ

2 | NAJD

3 | DAREEN

4 | REMAL

5 | AL FAIROUZ

6 | AL JAAD

7 | FARSAN