



Rosewood London is a 1914 Edwardian, Grade II-listed building, which combines English heritage with contemporary sophistication. After a sensitive transformation of the historical property by renowned Tony Chi and Associates, the five-star ultra-luxury hotel is the perfect location for corporate meetings and social events. Located in Holborn, one of London's most historic locales where the City meets the West End, also known as 'Midtown'. Rosewood London is moments from Covent Garden.

263

ROOMS

45

SUITES +
SIGNATURE SUITES

II

EVENT SPACES

3

RESTAURANTS
+ BAR

ROSEWOOD
LONDON



ACCOMMODATION

Conveying the feel of a stylish London residence, the hotel features 263 rooms and 45 suites that are among the most spacious in London. Informed by the traditions of a British manor house, the five-star hotel's stylish rooms are crafted from the finest materials and to the highest standard including fine Italian bedding and Italian marble bathrooms.

Rosewood London benefit from complimentary wireless high-speed internet access and all bedrooms are also equipped with 46-inch LED televisions and Geneva sound systems with iPod/ iPhone docking stations.

MEETING AND EVENTS

The meeting facilities encompass 11 event spaces, including a 387 Sq M (4,273 Sq Ft) Grand Ballroom, three heritage boardrooms and three private dining rooms including one with a show kitchen. With over 1,083 Sq M (11,660 Sq Ft) of indoor meeting space, Rosewood London can cater for all sizes and types of gatherings, seating up to 200 guests cabaret style or 340 for a banquet.

All spaces benefit from complimentary wireless high-speed internet access. On-site audio visual and production services are also available.

GROUPS

Our Executive King Rooms which are primarily offered for group stays, provide comfort and style in equal measure, capturing the sophistication of a modern London residence. At an average size of 31 Sq M, the urban refuge is filled with thoughtfully considered furnishings and features a luxurious marble bathroom with deep soaking tub and overhead shower. A tall ceiling, reaching up to 3.7 M, accentuates the room's sense of space.

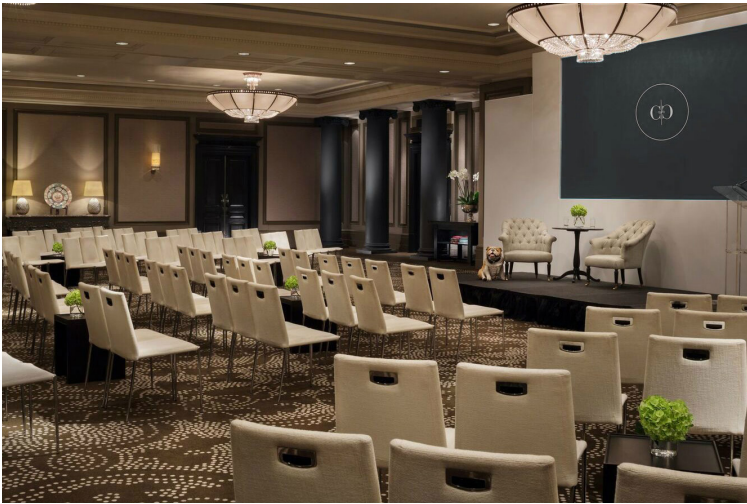
SPA & FITNESS

Rosewood London's Sense®, A Rosewood Spa is the epitome of style and tranquillity. This urban retreat features six treatment rooms, one of which is an exclusive duet suite, dry sauna and amethyst crystal steam room. It also offers an array of nurturing treatments and products from our spa brands; Votary, Sodashi, Humanity and Face Place.

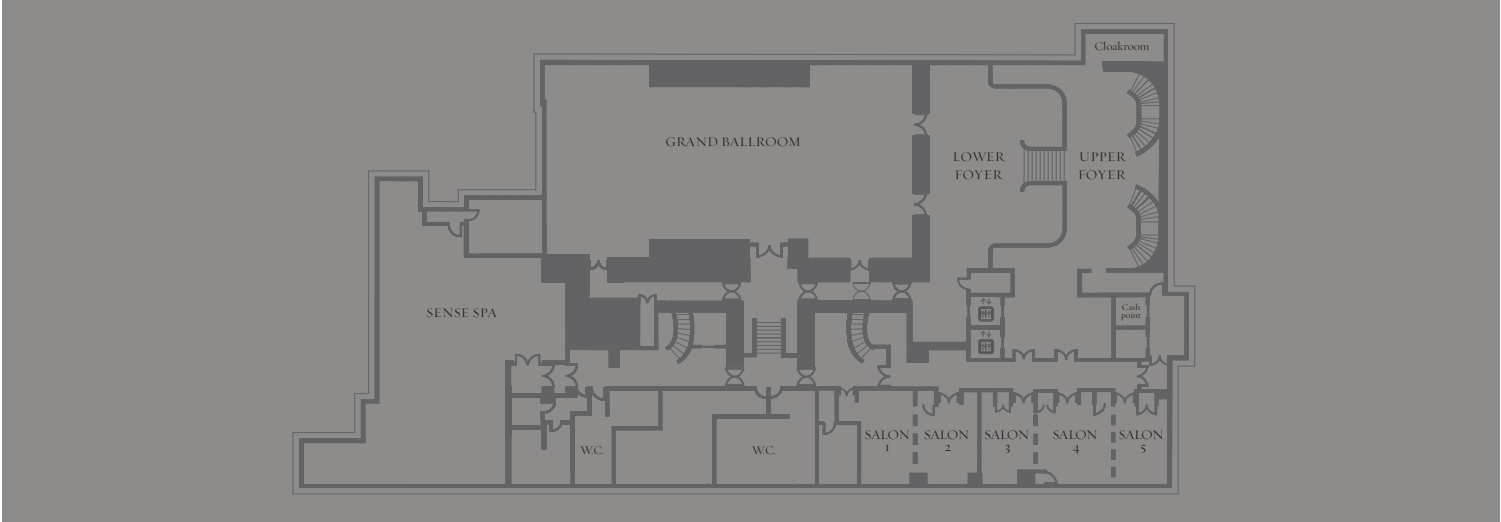
The Fitness Suite at Rosewood London is open 24h and combines a contemporary design with the latest cutting edge gym equipment from Technogym providing a calming and luxury environment for the ultimate workout. A personal trainer is also available on demand.

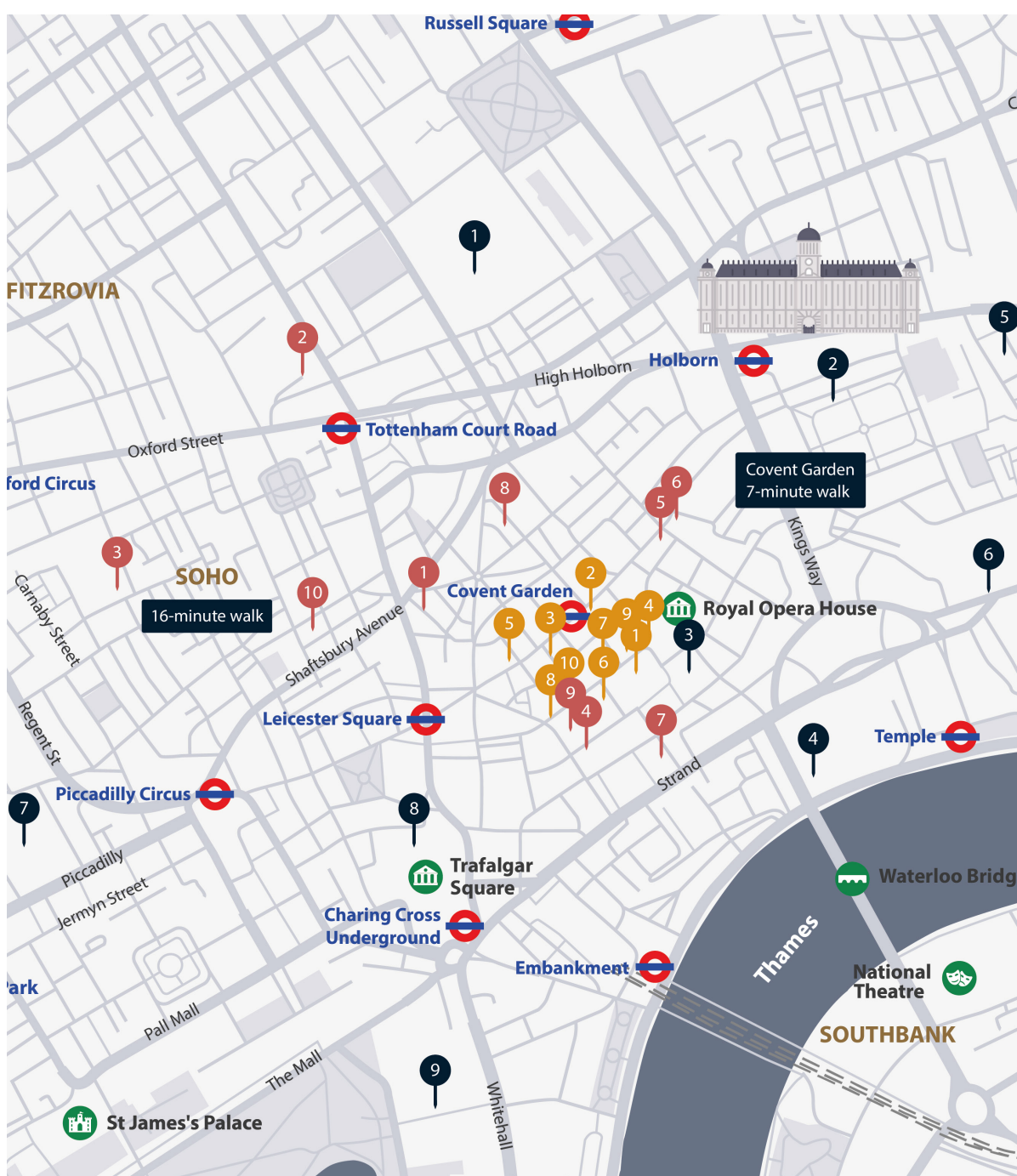
DINING

- **MIRROR ROOM:** Situated in the heart of the hotel offering social dining and art afternoon tea in a striking convivial salon adorned with mirrors.
 - **SCARFES BAR:** An artfully social bar where paintings and potions meet live jazz.
 - **HOLBORN DINING ROOM:** A bustling grand brasserie with a selection of contemporary yet sophisticated British dishes.
 - **THE PIE ROOM:** A destination dedicated to one of Britain's most iconic dishes. The Pie Room is a treasure trove of savoury delicacies all handmade by our team of pastry experts.
 - **THE GIN BAR:** Offering the largest collection of gin, guests can savour more than 14,000 possible gin and tonic pairings from well-known international brands to small-batch and local distillers to choose from.
 - **THE TERRACE:** Dine al fresco all year round on the heated Terrace, located in the hotel's peaceful inner courtyard.
-



	Square meters	Square feet	Reception	Lunch Dinner	Dinner Dance	Classroom		Theatre		Cabaret		Boardroom	U Shape
						PROJECTION		PROJECTION		PROJECTION			
						FRONT	BACK	FRONT	BACK	FRONT	BACK		
SIR GEORGE	49	527	30	16	-	-	-	30	-	-	-	16	15
SIR JAMES	38	409	-	12	-	-	-	-	-	-	-	12	-
SIR GEOFFREY	38	409	-	14	-	-	-	-	-	-	-	14	-
LIVING ROOM	80	861	60	30	-	22	-	40	-	24	-	24	24
DINING ROOM	60	645	42	20	-	12	-	25	-	18	-	12	16
THE PIE ROOM	-	-	-	10	-	-	-	-	-	-	-	-	-
GRAND BALLROOM	457	4,919	470	340	280	290	255	470	390	240	180	100	110
BALLROOM ONE	145	1,561	150	100	70	90	80	120	90	72	48	40	45
BALLROOM TWO	165	1,776	180	140	100	110	90	150	120	96	76	40	50
BALLROOM THREE	147	1,582	150	100	70	90	80	120	90	72	48	40	45
FOYER	176	1,894	340	70	50	-	-	-	-	-	-	30	-
BALLROOM ONE AND TWO	310	3,337	300	240	160	200	170	270	210	168	124	40	60
BALLROOM TWO AND THREE	312	3,358	300	240	160	200	170	270	210	168	124	40	60
SALON I	39	420	30	20	-	18	-	30	-	16	-	14	21
SALON II	36.5	393	25	12	-	18	-	24	-	8	-	14	18
SALON III	33	355	25	12	-	18	-	24	-	16	-	14	18
SALON IV	29	312	25	12	-	18	-	24	-	16	-	14	18
SALON V	35.5	382	30	20	-	18	-	30	-	16	-	14	18
SALON I & II	75.5	813	60	40	-	30	-	55	40	32	-	24	30
SALON III & IV	62	667	40	36	-	30	-	55	40	24	-	22	26
SALON IV & V	64.5	694	50	36	-	36	-	60	45	24	-	22	26
SALON III, IV & V	97.5	1049	100	70	40	69	50	95	60	56	40	40	45





Tourist Locations

1. The British Museum
2. Sir John Soane's Museum
3. London Transport Museum
4. Somerset House
5. London Silver Vaults
6. Royal Courts of Justice
7. Royal Academy of Arts
8. National Gallery
9. Horse Guards Parade
10. Churchill War Rooms

Shopping

1. Chanel
2. Tiffany & Co.
3. Diptyque Paris
4. Mulberry
5. Barbour
6. Tom Ford Beauty
7. Apple
8. Ba&sh
9. Vashi
10. Hackett

Cafés & Restaurants

1. Louie
2. Hakkasan Hanway Place
3. Social Eating House by Jason Atherton
4. Frenchie
5. Barrafinà
6. Margot
7. Frog by Adam Handling
8. The Barbary
9. Petersham Nurseries
10. Gauthier Soho

ROSEWOOD LONDON

TEL: +44 207 781 8888 Y FAX: +44 207 781 0888

ROSEWOODHOTELS.COM/LONDON Y LONDON@ROSEWOODHOTELS.COM

ROSEWOOD LONDON EVENT SALES

+44 (0)203 747 8120 Y LONDON.EVENTS@ROSEWOODHOTELS.COM

ROSEWOOD LONDON GROUP SALES

+44 (0)203 747 8149 Y LONDON.GROUPSALES@ROSEWOODHOTELS.COM

252 HIGH HOLBORN
LONDON WC1V 7EN
UNITED KINGDOM