





Hello

*My name is Pearl and I am
Rosewood London's resident
retriever. It is a pleasure
to welcome you to my home
and I hope you enjoy your
experience with us.*

*If you ever want to see how I
enjoy this amazing city, then
follow me on Instagram
[@pearlofrosewoodlondon!](#)*



Dog-friendly restaurants

Shake Shack

Covent Garden, 24 Market Building, The Piazza, London WC2E 8RD

While they serve up hot dogs here – there's no reason for your four-legged friend to be afraid, in fact they even have two items on the menu for them. The Pooch-ini (for medium & big dogs) is a blend of Red Velvet dog biscuits, peanut butter sauce and vanilla custard, or you can opt for the Bag O'Bones doggie bag.

5-minutes' walk from Rosewood London.

Andrew Edmunds

46 Lexington Street, London W1F 0LP

Andrew Edmunds is a Soho gem and the ultimate celebrity dog hang out. It has an old, worn charm with a candlelit interior and ever-changing menu of seasonal British dishes.

10-minutes' walk from Rosewood London.

ZL Café

20 Sberwood St, London W1F 7ED

(at entrance to Brasserie Zedel)

Sip a cup of coffee or a glass of wine with light petits plats and pretend you're in France in this off-street Parisian-style café in the middle of Soho. Only small dogs are allowed



at the manager's discretion, so give your dog a beret and sweet-talk your way in.

20-minutes' walk from Rosewood London.

Riding House Café

*43-51 Great Titchfield Street,
London W17PQ*

Located just off Oxford Street, Riding House Café is an all-day brasserie and a perfect pet pit stop.

25-minutes' walk from Rosewood London.



Maggie Jones

6 Old Court Place, Kensington Church Street London W8 4PL

A favourite of Princess Anne (she used to book there under the name "Maggie Jones"), this eccentric restaurant tucked away in a little corner of Kensington, bursts with cosy clutter. The menu features classic British dishes and the staff are happy to accommodate well-behaved hounds.

Central line from Holborn to Notting Hill Gate.

PipsDish

41 Hoxton Square, London N1 6PB

PipsDish in trendy Hoxton is a "no menu" restaurant which serves up freshly prepared dishes with what is in season and available that day.

243 Bus from Holborn towards Wood Green. Alight at Great Eastern Street.

Dog-friendly coffee shops and pubs

The Crown & Two Chairmen

31-32 Dean Street, London W1D 3SB

This Soho stalwart is happy to welcome you and your dog for an authentic British pub experience. Head there on a Sunday for one of their roasts.

10-minutes' walk from Rosewood London.

Punch Tavern

99 Fleet Street, London EC4Y 1DE

This Grade II listed Victorian former gin palace is brimming with history and also a big fan of dogs. Take a look at the original features, like the fireplace, oak panelling and marble bar, as well as some original Punch & Judy paintings while you're there.

15-minutes' walk from Rosewood London.

The Grazing Goat

6 New Quebec St, London W1H 7RQ

This charming gastro-pub which boasts a seasonal British menu has open fireplaces in the bar and is great in the winter. It's also lovely in summer, with a handful of tables on the pavement outside to enjoy your food and drink. As it is located near Hyde Park it is the perfect place to end up after a Sunday morning stroll with a canine friend.

25-minutes' walk from Rosewood London.



Doggie Sunday at Gaucho Hampstead

64 Heath Street, London NW3 1DN

On the first Sunday of every month, Gaucho goes to the dogs at their infamous "Doggy Sundays". Boasting a different theme each month (from Oscars do's to beach parties!) and plenty of treats for both humans and hounds. Given its proximity to London's sprawling Hampstead Heath, it is the perfect day out.

Piccadilly line from Holborn to Kings Cross and then the Northern line to Hampstead.

The Thomas Cubbitt

44 Elizabeth St, London SW1W 9PA

This posh pub and dining room in London's upmarket Belgravia is popular with the area's many pooches. Dogs are welcome in the downstairs bar with its classic country-house style interior.

Central line from Holborn to Oxford Circus, then the Victoria line to Victoria.



Shops

Hiro + Wolf

146 Columbia Road, London, E2 7RG

Trendsetters of the Shoreditch pup scene, Hiro + Wolf hand craft their colourful accessories for cats and dogs using luxurious supple leathers and vibrant fabrics sourced on their travels to East Africa and India.



Holly & Lil: The Collar Makers

103 Bermondsey St, London SE1 3XB

“A fashion haven for all dog lovers” says *Vogue*. And yes, dogs are free to roam around their very own fashion emporium. It is an eclectic, quirky, charming and very English shop that treats dogs like kings and queens.

Liberty of London

Carnaby Street, London W1B 5AH

As one of the last great emporiums for innovative and eclectic design, Liberty is the destination of choice for the chic-est of shoppers and their pets. Small dogs are allowed into the shop providing they remain on leads.



Barbour

134 Long Acre, London WC2E 9AA

Famous British outdoor brand which sells a wide range of canine coats, collars, beds and blankets.

Parks and open spaces

Lincolns Inn Fields

3-minute walk from Rosewood London.

St. James's Park

25-minute walk from Rosewood London.

Green Park

30-minute walk from Rosewood London.

Regents Park

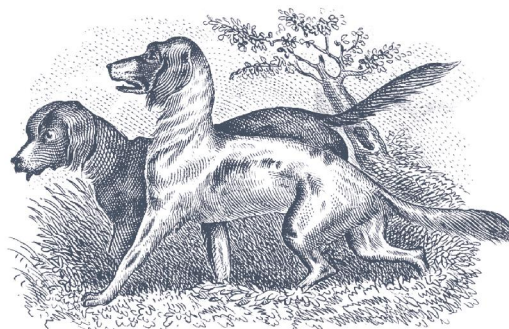
30-minute walk from Rosewood London.

Hyde Park

40-minute walk from Rosewood London, or take the Piccadilly line from Holborn to Hyde Park Corner.

Primrose Hill

50-minute walk from Rosewood London or take the Central line to Tottenham Court Road, then change to the Northern line for Chalk Farm.





Dog-grooming

Jamie Griffen

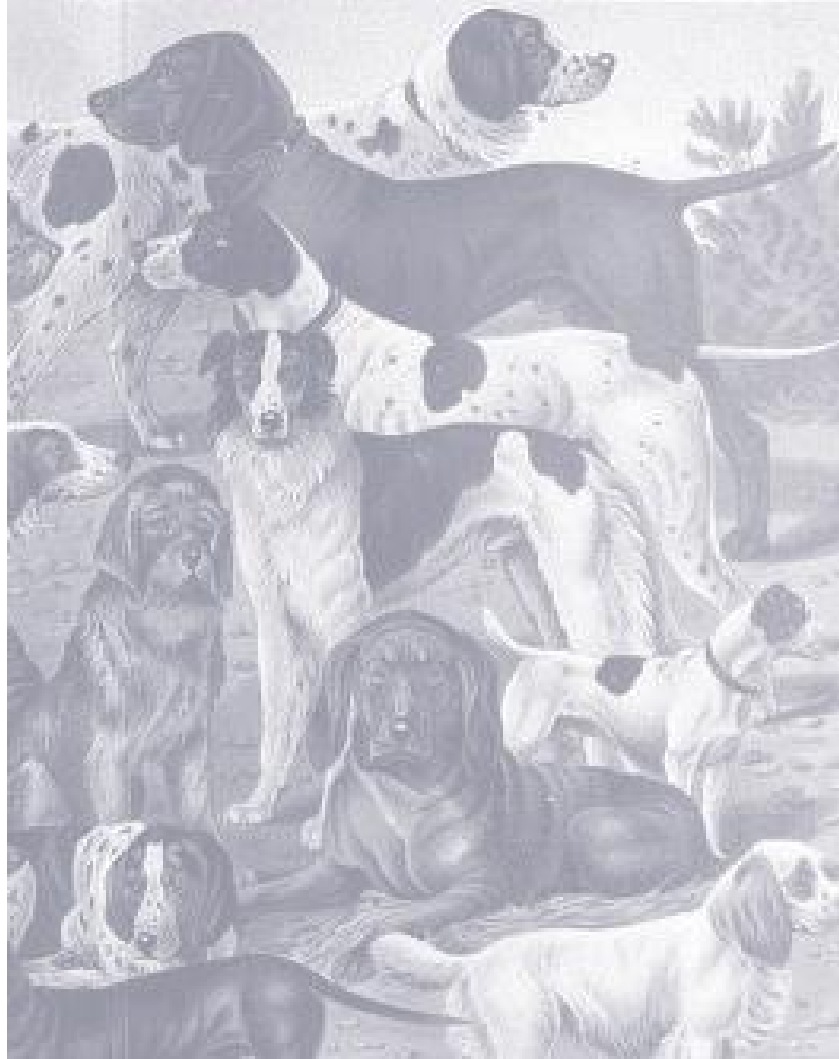
Celebrity dog groomer with a Canine concierge service, Jamie offers expert nutritional advice, pet-grooming services and indulgent spa treatments. Please speak to a member of our concierge team for details.

Dog-services

At Rosewood London we work with the best partners in animal care and can organise the following services:

- Dog Walking
- Dog Sitting
- Dog Training

Please speak to a member of our concierge team who will be very happy to arrange this for you.



Dog-friendly restaurants

1. Shake Shack
2. Andrew Edmunds
3. Riding House Café
4. ZL Café
5. PipsDish

Dog-friendly coffee shops and pubs

6. The Crown & Two Chairmen
7. Punch Tavern
8. The Grazing Goat

Shops

9. Holly & Lil
10. Liberty of London
11. Hiro + Wolf
12. Barbour

Parks & open spaces

13. Bloomsbury Square Gardens
14. Red Lion Gardens
15. Coram's Fields
16. Regent's Park
17. Green Park
18. Hyde Park
19. Russell Square
20. Temple Gardens
21. Lincoln's Inn Fields
22. Gray's Inn Gardens
23. Finsbury Circus and Finsbury Square
24. St Mary Aldermanbury Garden





BLOOMSBURY

CLERKENWELL

ROSEWOOD
LONDON

SOHO

SOUTH BANK



Russell Square



Russell Square



Warren Street



Goodge Street



Oxford Circus



Piccadilly Circus

Leicester Square

Charing Cross

Embankment

Holborn

Temple

Blackfriars

Barbican

Farringdon

St Paul's Cathedral

St Paul's Cathedral

Blackfriars Bridge

Millennium Bridge

Victoria Embankment

Millennium Bridge

Warren Street

Goodge Street

Goodge Street

Goodge Street

Goodge Street

Goodge Street

Goodge Street

Goodge Street

Goodge Street

Goodge Street

Goodge Street

Goodge Street

Goodge Street

Goodge Street

Goodge Street

Goodge Street

Goodge Street

Goodge Street

Goodge Street

Goodge Street

Goodge Street

Goodge Street

Goodge Street

Goodge Street

Goodge Street

Goodge Street

Goodge Street

Goodge Street

Goodge Street

Goodge Street

Goodge Street

Goodge Street

Goodge Street

Goodge Street

Goodge Street

Goodge Street

Goodge Street

Goodge Street

Goodge Street

Goodge Street

Goodge Street

Goodge Street

Goodge Street

Goodge Street

Goodge Street

Goodge Street

Goodge Street

Goodge Street

Goodge Street

Goodge Street

Goodge Street

Goodge Street

Goodge Street

Goodge Street

Goodge Street

Goodge Street

Goodge Street

Goodge Street

Goodge Street

Goodge Street

Goodge Street

Goodge Street

Goodge Street

Goodge Street

Goodge Street

Goodge Street

Goodge Street

Goodge Street

Goodge Street

Goodge Street

Goodge Street

Goodge Street

Goodge Street

Goodge Street

Goodge Street

Goodge Street

Goodge Street

Goodge Street

Goodge Street

Goodge Street

Goodge Street

Goodge Street

Goodge Street

Goodge Street

Goodge Street

Goodge Street

Goodge Street

Goodge Street

Goodge Street

Goodge Street

Goodge Street

Goodge Street

Goodge Street

Goodge Street

Goodge Street

Goodge Street

Goodge Street

Goodge Street

Goodge Street

Goodge Street

Goodge Street

Goodge Street

Goodge Street

Goodge Street

Goodge Street

Goodge Street

Goodge Street

Goodge Street

Goodge Street

Goodge Street

Goodge Street



ROSEWOOD
LONDON

in association with

Barbour.Dogs®

Rosewood London, 252 High Holborn, London WC1V 7EN +44 (0)20 7781 8888

www.rosewoodhotels.com/en/london

