

THE MODERN SPIRIT OF MUNICH

MUNICH

ROSEWOOD

The modern spirit of Munich, the ideal host for the discerning traveler, where timeless Bavarian charm is met with an innovative, contemporary flair. Pass through the monumental porticoed entrance into one of Munich's greatest institutions, where tradition is elevated to creative new heights. There is a lively, charming spirit here. A feeling of being welcomed into a culturally connected haven, that is both exclusive and refreshingly open.

Nestled in the heart of Munich's old town, this is a seamless flow of old to new. A harmonious fusion of tradition and modernity.

Hearty and seasonal alpine dishes with an innovative spin. From creative collaborations to partnerships with renowned brands, Rosewood Munich is a scene-defining spot. In the evenings, the low-lit rhythms of Bar Montez spill out onto the surrounding streets, bringing together a community of like-minded people – city-dwellers and guests alike. An icon in its own right, always looking to the future with ever-changing, diverse experiences that reflect the city's dynamic heart.

132 Rooms

51 Suites

6 Event Spaces

3 Restaurants
+ Bars



EXPERIENCES

Embark on a journey of soulful nourishment with our curated experiences, where enrichment, excitement, and enlightenment converge into a tapestry of discovery.

Afternoon Tea for Two

Celebrate the season in style with our exclusive Afternoon Tea at Rosewood Munich. Indulge in a luxurious selection of savory and sweet delights, created by Shinas Shahida.

A Night at Bar Montez

Cocktail lovers and aficionados alike will relish a night at Bar Montez. This experience includes an aperitif, four signature cocktails, made by our talented mixologists as well as two snacks to share.

Asaya Day Spa

Indulge in the ultimate relaxation experience with our Asaya Day Spa and immerse yourself in a day of self-care, offering a perfect balance of holistic well-being and culinary delights.



DINING

Rosewood Munich's culinary experiences are a celebration of Bavarian heritage

Brasserie Cuvilliés

A modern take on Alpine dining, where seasonal ingredients and regional flavours are reimagined with flair. An open kitchen and lively dining room set the scene, alongside a Chef's Table and private spaces for more intimate occasions.

Bar Montez

Inspired by the daring spirit of Lola Montez, this bar brings together live music, inventive cocktails, and a refined wine and spirits list. A place where Munich's evenings unfold in style, from first drink to last note.

Wintergarten & Palaishof

The vibrant heart of the hotel — a glasshouse warmed by a fireplace and opening onto a leafy courtyard. From wholesome breakfasts to decadent afternoon tea, it's a welcoming space to gather any time of day.

IOOB

Slip behind an unmarked door into an intimate, softly lit hideaway. Here, expertly crafted cocktails and an indulgent atmosphere transform a night out into something unforgettable.



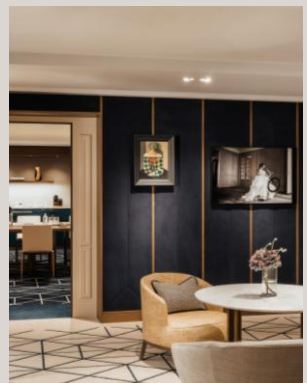


MEETINGS AND EVENTS

From grand celebrations to intimate gatherings, Rosewood Munich sets the stage. Six distinctive spaces — including a historic ballroom with its own balcony — offer a setting where heritage and modern design meet.

Each space has its own character, from the grandeur of the main ballroom to the intimacy of private salons. Rooms filled with natural light open directly onto terraces, creating an easy connection with the outdoors.

Be it a business event, a dinner with impact, or a celebration to remember, every detail is considered. With advanced technology, thoughtful design, and intuitive service, gatherings here are seamless, memorable, and unmistakably Munich.



EVENT SPACES

Ballroom

Size: 234 square meters

Measurements in meters (l x w x h): 17 x 13 x 4,3

Salon I

Size: 78 square meters

Measurements in meters (l x w x h): 7,7 x 10 x 4,3

Salon II

Size: 53 square meters

Measurements in meters (l x w x h): 4,8 x 10 x 4,3

Salon III

Size: 70 square meters

Measurements in meters (l x w x h): 7 x 9 x 2,3

Salon IV

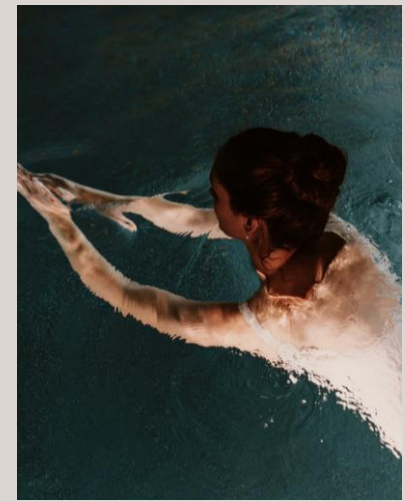
Size: 50 square meters

Measurements in meters (l x w x h): 4,7 x 9 x 2,3

Salon Neuhaus-Preysing

Size: 123 square meters

Measurements in meters (l x w x h): 16 x 7,6 x 4,4



WELLNESS

Experience the ultimate escape at Asaya Spa, Rosewood Munich's integrative wellness destination, with 1500 sqm of relaxation, a fitness suite equipped by Technogym, saunas, steam bath and a grand indoor pool. At Asaya Spa, a journey to self-care is a reward for every visitor. Blending time-honored practices with thoughtfully curated amenities, our soothing spa services, healing modalities, and guided programs are designed to restore the body and help you reconnect with yourself.

ROSEWOOD MUNICH

KARDINAL-FAULHABER-STRASSE 1
80333 MUNICH, GERMANY

TEL: +49 89 8000190 | EMAIL: MUNICH@ROSEWOODHOTELS.COM

ROSEWOODHOTELS.COM/MUNICH
@ROSEWOODMUNICH

