



Rosewood Munich is a blend of historic grandeur and contemporary luxury, that captures the vibrance of the city's compelling Bavarian culture. Steps from Marienplatz Square, the heart and soul of Munich, this magnificent hotel is a setting where exploration and enrichment go hand in hand.

73

ROOMS

54

SUITES

5

HOUSES

6

EVENT SPACES

3

RESTAURANTS + BARS

ROSEWOOD MUNICH





Premier Suite



Prinzessin Augusta House Balcony



Restaurant Cuvilliés

HISTORIC MUNICH, MODERN LUXURY
Rosewood Munich allows oneself *to* immerse the
rich history *and* culture *of* Munich whilst indulging *in* our
exceptional hospitality.

A SENSE *of* DISCOVERY. A SENSE *of* PLACE.®

LOCATION

Housed in two beautifully restored historic buildings — the former State Bank of Bavaria headquarters and the adjacent Palais Neuhaus- Preysing aristocratic residence. Ideally situated on the Kardinal-Faulhaber-Strasse in the heart of the historic city center.

ROOMS & SUITES

Indulge in residential comfort and style at Rosewood Munich. Retaining the charm of its location, our 73 guestrooms feature thoughtful touches and luxurious amenities catering to both leisure and business travelers. Experience the epitome of privacy and spaciousness in one of Rosewood Munich's 54 elegantly designed suites. Adorned with custom furnishings and beautiful objects d'art, these expansive suites offer a sophisticated residential atmosphere for the ideal urban retreat.

HOUSES & MULTI-BEDROOM SUITES

A distinctive highlight are the five houses, which offer a unique and spacious sanctuary. Located on the top floors of the hotel, these exquisite accommodations feature large windows that brighten the space with natural light, as well as generous bedrooms, living and dining areas, and stunning marble bathrooms. Some feature open fireplaces, fully-equipped kitchens and outdoor terraces with breathtaking views of the city.

WELLNESS

Experience the ultimate escape at Asaya Spa, Rosewood Munich's integrative wellness destination, with 1500 sqm of relaxation, a fitness suite equipped by Technogym, saunas, steam bath and a grand indoor pool.

At Asaya Spa, a journey to self-care is a reward for every visitor. Blending time-honoured practices with thoughtfully curated amenities, our soothing spa services, healing modalities, and guided programs are designed to restore the body and help you reconnect with yourself.

MEETING & EVENTS

The meeting facilities encompass 6 event spaces, including a 234 sqm (2519 sqft) grand ballroom, one historic junior ballroom and four flexible meeting and breakout rooms. Both ballrooms are connected to outdoor spaces. With over 600 sqm (6,450 sqft) of indoor meeting space, Rosewood Munich can cater for all sizes and types of gatherings from corporate meetings, to intimate dinners, lifestyle events or social celebrations. All spaces benefit from complimentary wireless high-speed internet access and on-site audio visual and production services. A dedicated event specialist is looking forward to planning your event with you.

RESTAURANTS & LOUNGES

Rosewood Munich's culinary experiences are a celebration of Bavarian heritage.

Bar Montez

Experience the captivating world of Bar Montez, a tribute to the renowned 19th-century icon Lola Montez, known for her fiery performances and love for life. Discover a sophisticated and inviting atmosphere with live music offering inventive cocktails, a fine selection of wine and spirits, and delicious bar snacks.

100B

Behind an unmarked door, a world of mystery and indulgence awaits. 100B is a sanctuary of dim light, luxurious ambiance, and expertly crafted cocktails that elevate the night into an art form.

Brasserie Cuvilliés

Indulge in the ultimate Alpine culinary adventure at Cuvilliés, where classic dishes are given a contemporary twist in a menu celebrating locally-sourced ingredients and the region's natural bounty. The brasserie features an open kitchen, lively Dining Room, Chef's Table, Private Dining Room, and Wine Gallery.

Wintergarten & Palaishof

The Wintergarten & Palaishof form the lively heart of the hotel. Step through the lobby into a cosy conservatory with its very own fireplace, where guests can enjoy all day dining from healthy breakfasts to decadent afternoon teas.



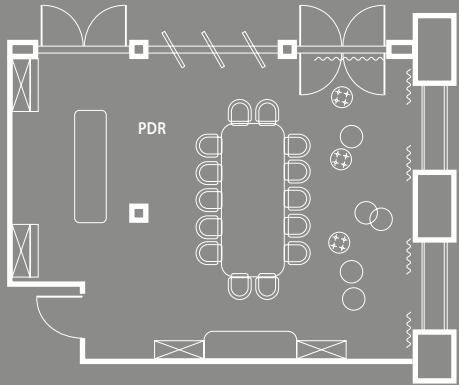
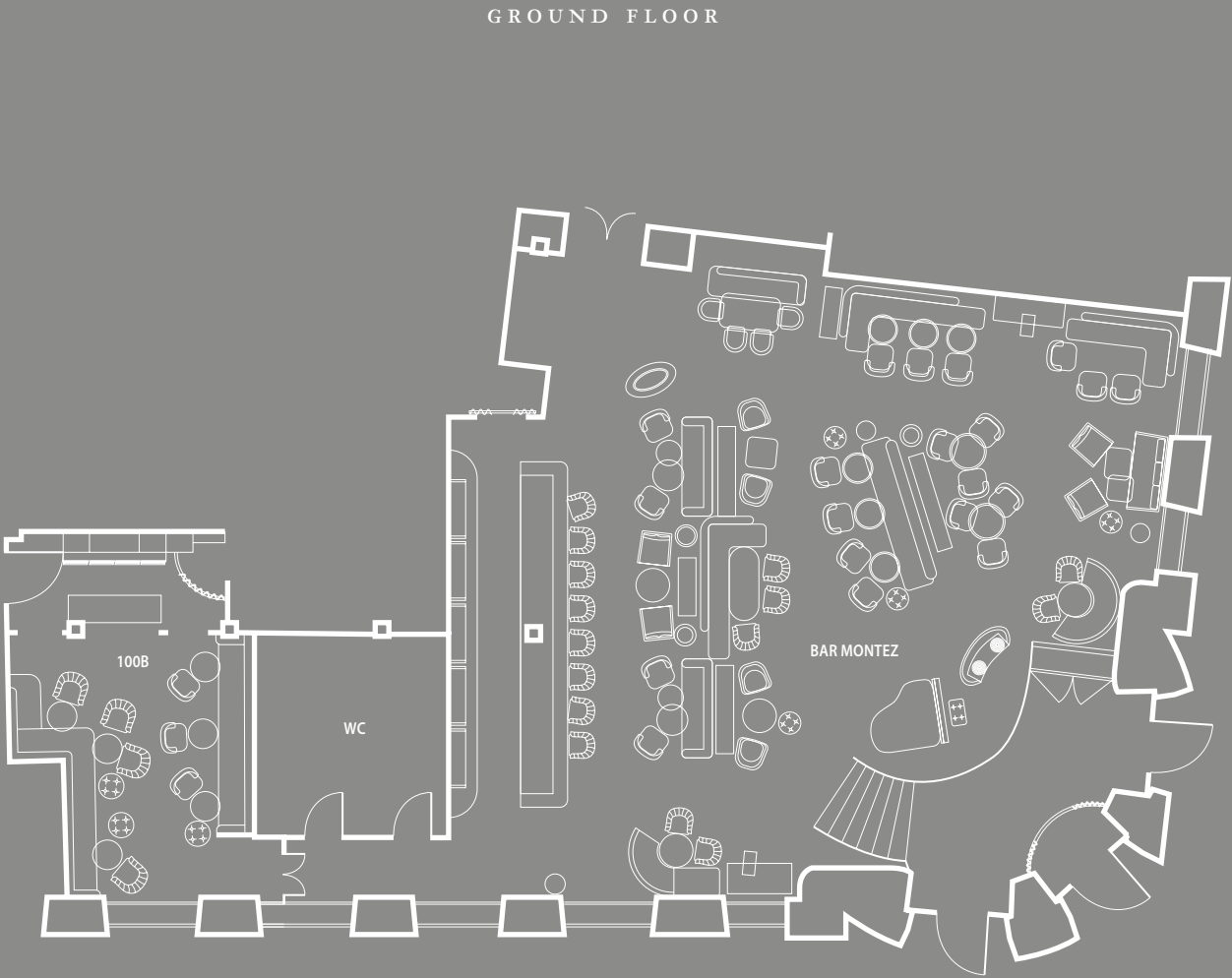
Private Dining Room (PDR)



100B (Speakeasy Bar)



Bar Montez



| Event Space | Size in sqm | Size in sqft | Measurements in m (l x w x h) | Daylight | Dinner (existing Setup) | Reception | Boardroom |
|---------------------------|-------------|--------------|-------------------------------|----------|-------------------------|-----------|-----------|
| Bar Montez | 189 | 2034 | 15 x 13 x 2,6 | Yes | 80 | 140 | - |
| 100B | 39 | 420 | 7,5 x 5,2 x 2,6 | Yes | 18 | 25 | - |
| Private Dining Room (PDR) | 64 | 689 | 9,5 x 6,5 x 2,7 | Yes | 14 | - | 14 |



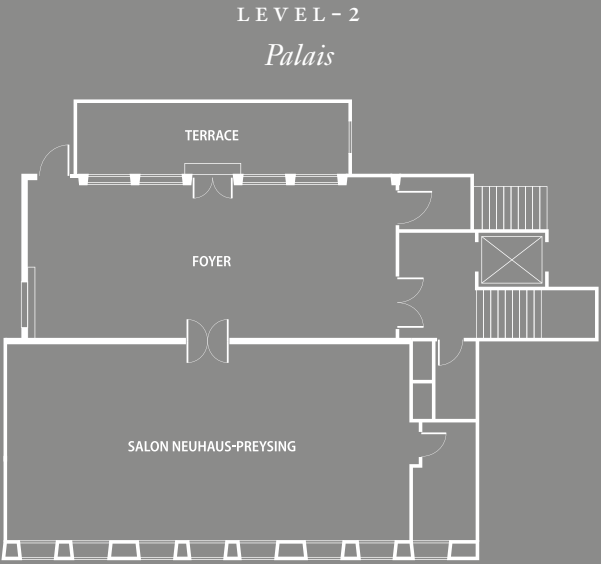
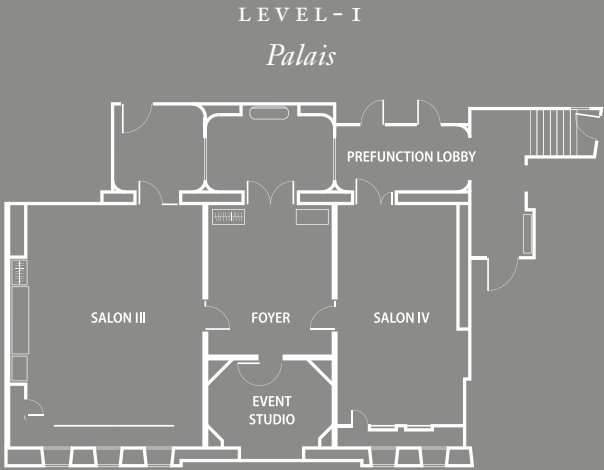
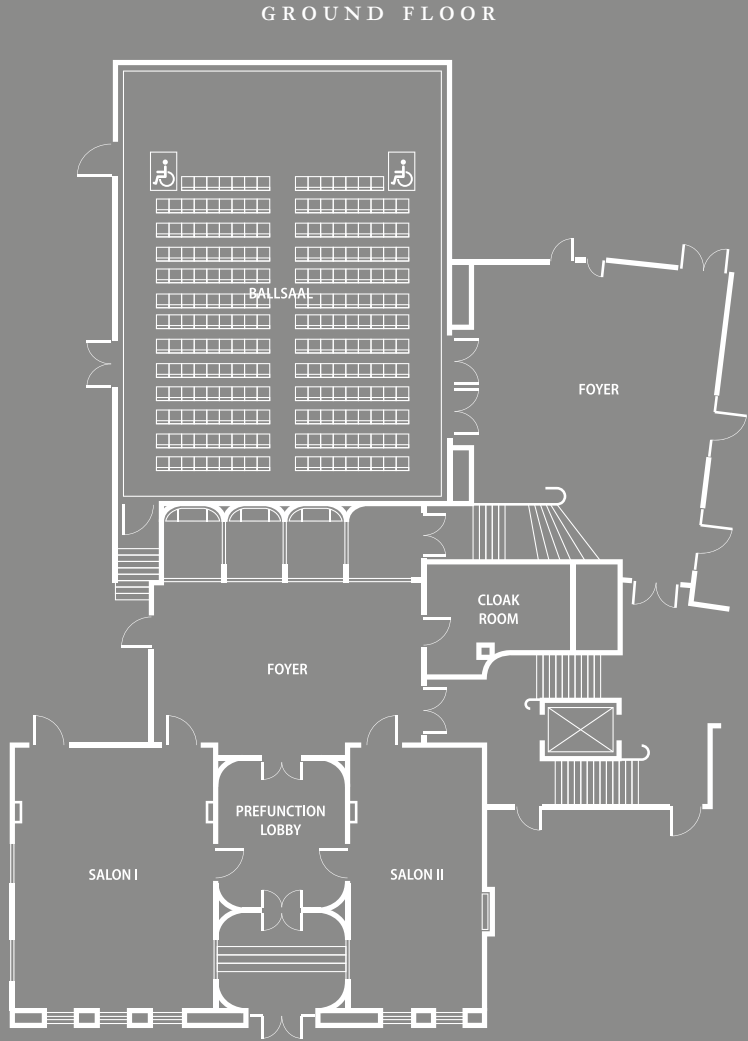
Ballroom Foyer



Salon II



Salon Neuhaus-Preysing



| Event Space | Size in sqm | Size in sqft | Measurements in m (l x w x h) | Daylight | Theatre | Classroom | Dinner (rounds) | Reception | Boardroom | U-shape |
|------------------------|-------------|--------------|-------------------------------------|----------|---------|-----------|--------------------|-----------|-----------|---------|
| Ballsaal | 234 | 2519 | 17 x 13x 4,3 | No | 200 | 126 | 130 | 220 | - | 63 |
| Salon I | 78 | 840 | 7,7 x 10 x 4,3 | Yes | 40 | - | 40 | 50 | 16 | 24 |
| Salon II | 53 | 570 | 4,8 x 10 x 4,3 | Yes | 25 | - | - | 30 | 16 | - |
| Salon III | 70 | 753 | 7 x 9 x 2,3 | No | 50 | 45 | - | 40 | 16 | 24 |
| Salon IV | 50 | 538 | 4,7 x 9 x 2,3 | No | 20 | 14 | - | 25 | 16 | - |
| Event Studio | 17 | 183 | - | No | - | - | - | - | 6 | - |
| Salon Neuhaus-Preysing | 123 | 1324 | 16 x 7,6 x 4,4 | Yes | 120 | 84 | 70 | 100 | 28 | 30 |

WITHIN 10 MINUTES' WALK
FROM THE HOTEL



ROSEWOOD MUNICH

TEL: +49 89 8000 19 0

rosewoodhotels.com/en/munich | munich.events@rosewoodhotels.com

ROSEWOOD SALES OFFICES

| | |
|---------------|--|
| NEW YORK | NEWYORK.GLOBALSALES@ROSEWOODHOTELS.COM |
| DALLAS | DALLAS.GLOBALSALES@ROSEWOODHOTELS.COM |
| LAS VEGAS | LASVEGAS.GLOBALSALES@ROSEWOODHOTELS.COM |
| LOS ANGELES | LOSANGELES.GLOBALSALES@ROSEWOODHOTELS.COM |
| MIAMI | MIAMI.GLOBALSALES@ROSEWOODHOTELS.COM |
| SAN FRANCISCO | SANFRANCISCO.GLOBALSALES@ROSEWOODHOTELS.COM |
| DUBAI | DUBAI.SALES@ROSEWOODHOTELS.COM |
| LONDON | LONDON.GLOBALSALES@ROSEWOODHOTELS.COM |
| HONG KONG SAR | HONGKONG.GLOBALSALES@ROSEWOODHOTELS.COM |
| BEIJING | BEIJING.GLOBALSALES@ROSEWOODHOTELS.COM |
| SHANGHAI | SHANGHAI.GLOBALSALES@ROSEWOODHOTELS.COM |
| SINGAPORE | SINGAPORE.GLOBALSALES@ROSEWOODHOTELS.COM |

KARDINAL-FAULHABER-STRASSE 1
80333 MUNICH, GERMANY