

INEFFABLE

PHENOMENA

# THE BOOK OF YOKAI

ABUNDANT

FLAVOUR

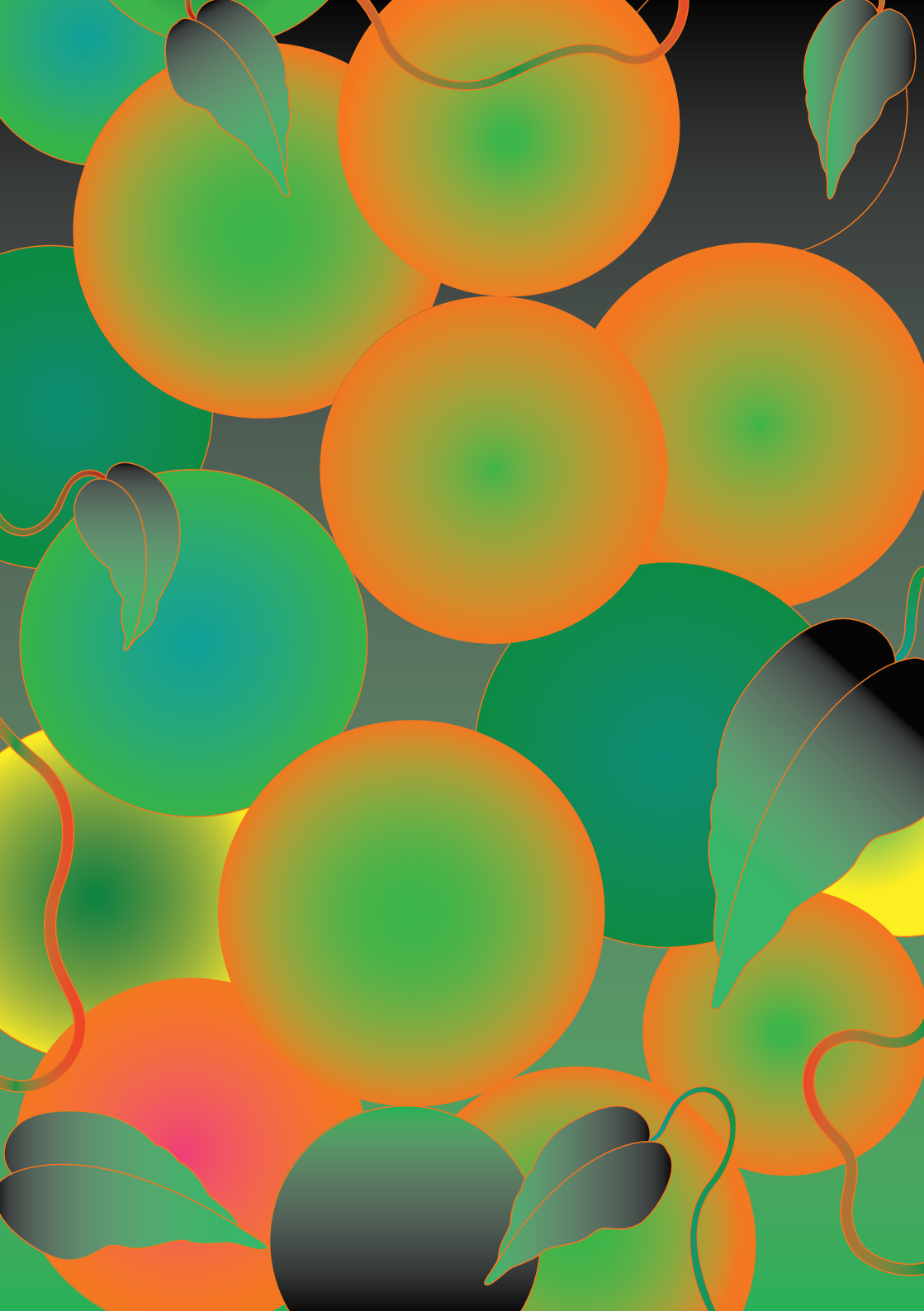
## COCKTAILS

A CELEBRATION OF  
WITH CAMBODIAN

JAPANESE LEGEND  
ESSENCE

SORA





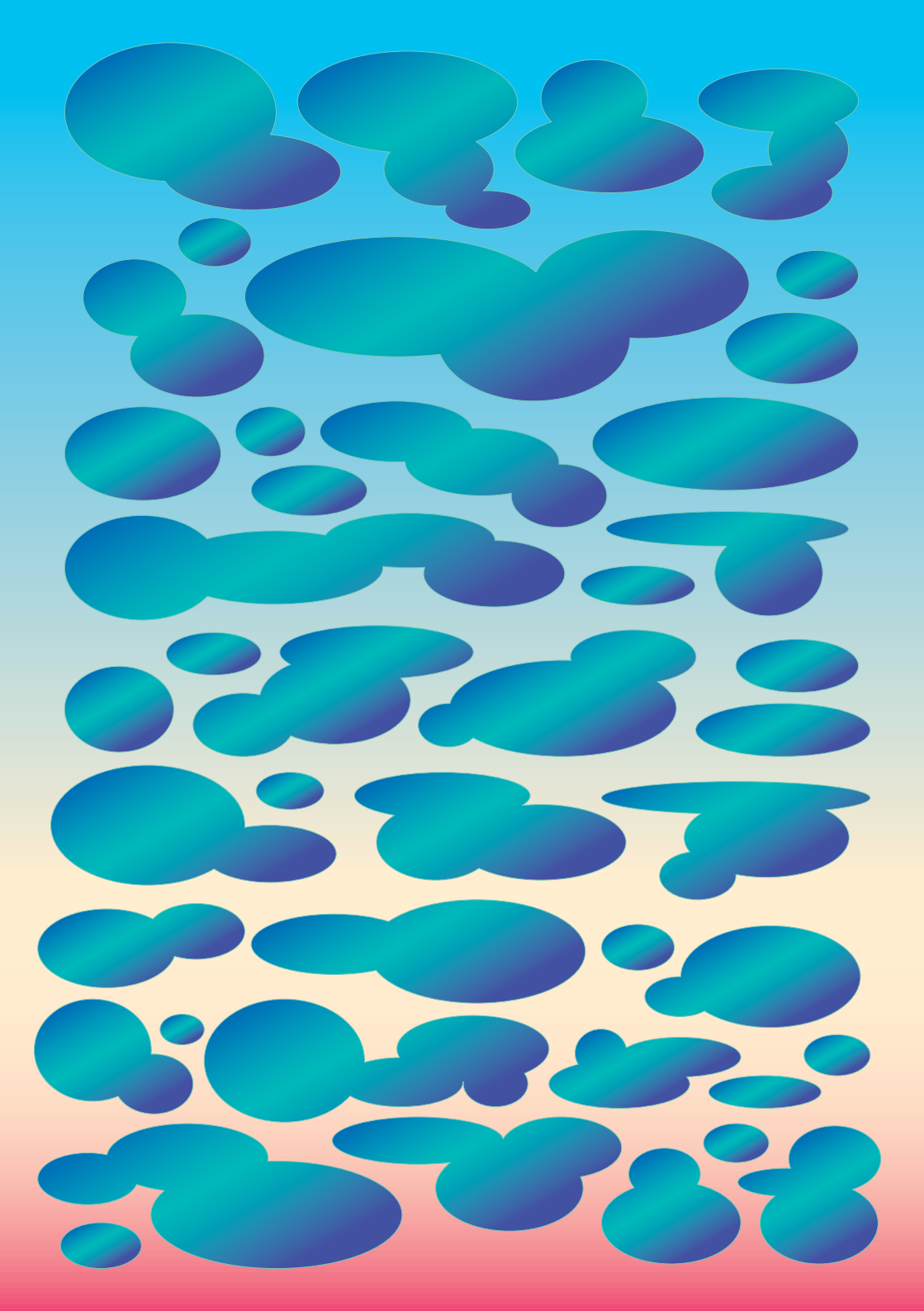
# THE BOOK OF YOKAI

## A CELEBRATION OF JAPANESE LEGEND & CAMBODIAN ESSENCE

THE BOOK OF YOKAI



Celebrates the tales, myths and folklore of the celestial and supernatural beings found amongst Japanese legend. The Yokai are the embodiment of a moment, a feeling of bewilderment, awe and wonder over an extraordinary event; a strange sound or peculiar scent that demands an explanation; an ineffable phenomenon explained only by a supernatural entity.



# COCKTAILS INFUSED WITH WONDER & NUANCED FLAVOUR

THE COCKTAILS CONTAINED HERE...



are intertwined with these incredible stories, fables and superstitions. Whilst at the same time we pay homage and respect to the unique Cambodian land and the abundance of flavour, ingredients and products found within.



DRAGON  
Powerful, Wise, Protector



RICE  
Sacred, Ceremonial, White Gold

THE BOW 'N THE ARROW

\$12

SAKE | RICE AND ALMOND MILK | STRAIGHT WHEAT VODKA |  
GRILLED LEMON | LEMONGRASS

The legend of Tawara Toda, whose real name was Fujiwara Hidesato, is a tale of one Japanese warrior's true bravery and kindness. To save the Dragon King of Lake Biwa's family, Tawara Toda battled a great centipede with only a bow and arrow. Finally defeating the beast with an arrow dipped in searing acid. As a show of gratitude the Dragon King granted the hero many gifts, including items such as a roll of silk as smooth as sake, a grilling pot and an inexhaustible bag of rice of both grain and milk.

GOD OF THE SEAS

\$12

LONDON DRY GIN | BROWN RICE | DRY VERMOUTH | RICE VINEGAR |  
SEA SMOKE SPRAY

Watsumi, great god of the oceans and seas had a vast palace built of the finest white marble at the very depths of the oceans. It is here where it is said that the annual agricultural rice rituals were created to ensure abundant and vast harvests by celebrating the god of seas. Tale has it that before appearing from the waters a slight film of smoke would be seen above the waves in anticipation.

JEWEL PRINCESS

\$12

PREMIER CRU COGNAC | GENMAICHA TEA | CHINATO VERMOUTH |  
AMARO AVERNA

Daughter of the sea god Watasumi and dragon princess of the oceans, for many years Toyotama-Hime lived under the oceans until finding the love of her life in the hunter Hoori. As a hunter Hoori could not afford lush presents for the princess and so would present her with gifts of rice and tea, which she would then turn into precious jewels.

ZERO HERO RICE - NON ALC

\$10

RICE AND ALMOND MILK | GRILLED LEMON | NUTMEG | LEMONGRASS

Some drinks may contain nuts, eggs or gelatin, please check with our associates for any allergies.  
Prices in USD excluding applicable taxes and 7% service charge.



TANUKI  
Joyous, Mischievous, Shape-shifting



SUGAR PALM  
Rich, Flavourful, Terroir

GREEN LEAF FIZZ

\$12

LONDON DRY GIN | KAFFIR LEAF | WHITE PORT | SUGAR PALM |  
CITRUS | FOAM | SODA | MATCHA

The Shibaemon-Tanuki of Awaji Island is a legend of Mount Mikuma where on moonlit nights with pleasant weather, he would drum his belly whilst drinking fragrant and spiced alcohol. Awaji island is famous for the sweet, high sugar content produce which is grown there. Shibaemon also had the most magical of trickery available to him, he would collect green leaves from trees in the forests and use his sorcery to convert them into currency.

SHAPESHIFTER

\$12

CASHEW NUT AGED RUM | AROMATIC BITTERS | SCOTCH WHISKY |  
MISO SUGAR PALM

The adventures of the Tanuki-Bayashi centres around the Shoji temple. A band of these shapeshifting Tanuki would transform themselves into various spectres and items and play their percussion music to compete with the nearby temple priests. Their drums would be made from the wood of their favourite fruit trees – the cashew nut. The priest, Waku, and this group of tanuki would stay up all night playing music rumbustiously until one side could no longer continue.

ROGUES GALLERY

\$12

STRAIGHT BOURBON WHISKEY | SWEET VERMOUTH | BANANA BREAD | CAMPARI

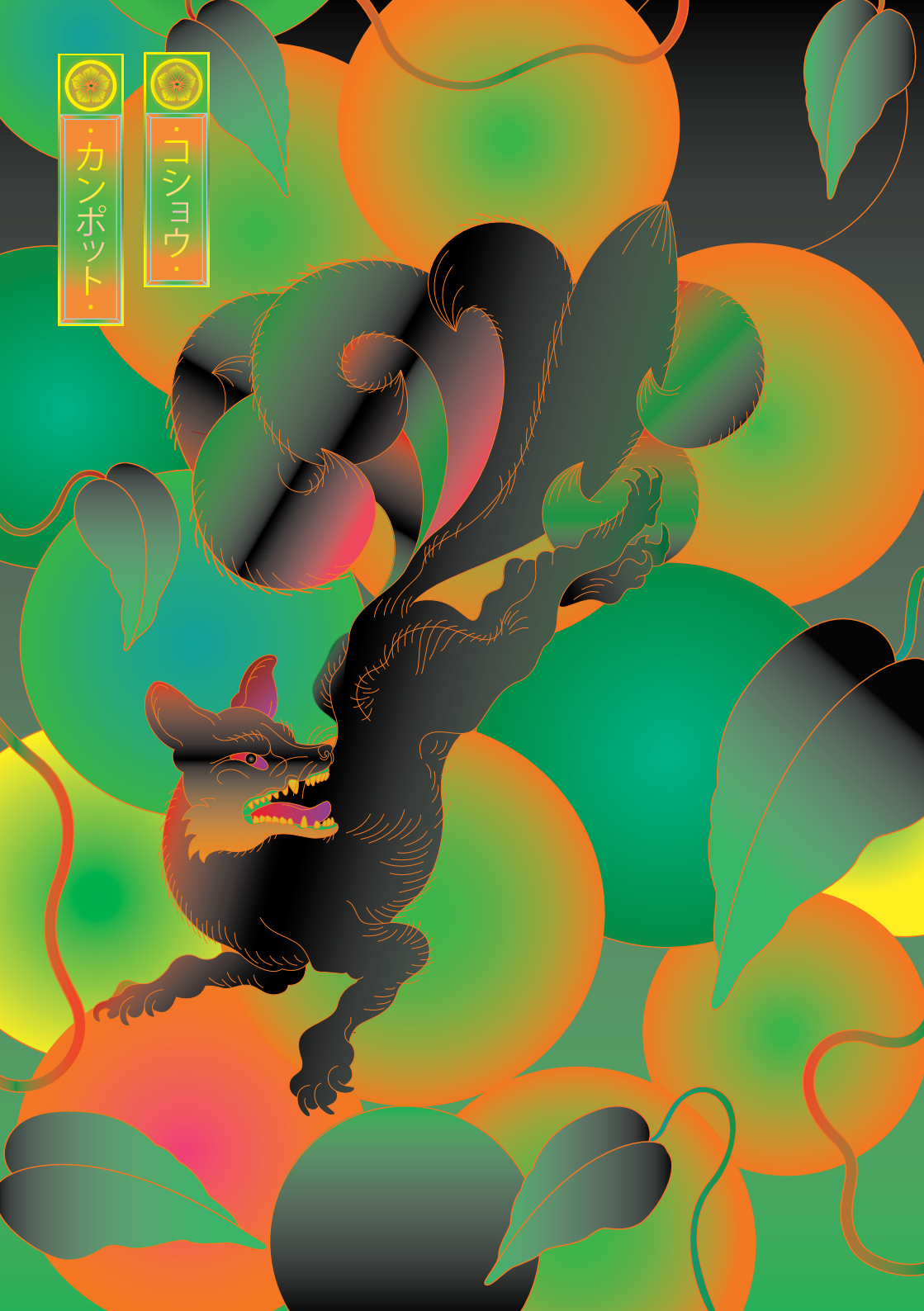
Most tales of Danzaburo, the supreme commander of the Tanuki on Sado Island and somewhat of a rogue, focus on his skills of trickery and the gallery of mischief he beheld. He constantly fooled people by selling leaves from trees by making them look as if they were made of gold. He also created mirages to lure people into his lair, making it appear as a splendid estate and offering them gifts of sweet fruit, bread, herbs and botanicals macerated in wine, if they were to join him.

ZERO HERO SUGAR PALM – NON ALC

\$10

COLD BREW COFFEE | MISO SUGAR PALM | FRESH MINT

Some drinks may contain nuts, eggs or gelatin, please check with our associates for any allergies.  
Prices in USD excluding applicable taxes and 7% service charge.



KITSUNE  
Spiritual, Supernatural Animals



KAMPOT PEPPER  
Peppercorn, Black Gold, Floral

SORA .75

\$12

SPARKLING SAKE | LONDON DRY GIN | KAMPOT PEPPER |  
PASSIONFRUIT SHERBET | CITRUS

The Kitsune no Yomeiri has long been a part of Japanese folklore, and has become a sign of celebration and joy – the bringing together of two cultures and passions. Many large processions would gather to honour the ceremony with the firing of canons and the clinking of glasses to bless the rituals. If a sun shower should follow the Yomeiri it would be a sign for a great harvest of fruit and spices.

THE FOX & THE LEAF

\$12

CAMBODIAN KAMPOT PEPPER RUM | SHISO SWEET VERMOUTH | MARASCHINO |  
KAMPOT BITTERS | PONZU

Kyubi no Kitsune, also known as the nine tailed fox, are said to be some of the most powerful creatures in all of Japanese mythology. These shrewd, dynamic Kitsune were rumoured to only find rest and sleep in fields of sugar cane grass with the bushes of the shiso leaf nearby.

CELESTIAL JULEP

\$12

RED KAMPOT PEPPER | CALVADOS | CITRUS | JASMINE FLOWER | APPLE CHIP

Zenko Kitsune are celestial, benevolent foxes, who attached themselves to Samurai families, protecting them in battle. Often appearing as priests, Zenko Kitsune would offer wisdom to humans in times of need. Kitsune also became closely related to the ritual of 'washoku' symbolizing the harmonious nature of flavours and the bounty of the land, presented here within the harmonising flavours of spice, jasmine and apple.

ZERO HERO KAMPOT - NON ALC

\$10

PASSIONFRUIT | KAMPOT SHERBET | CITRUS | SODA

Some drinks may contain nuts, eggs or gelatin, please check with our associates for any allergies.  
Prices in USD excluding applicable taxes and 7% service charge.



TENGU  
Fabled, Warrior, Mountain



BANANA  
Musa Aromatic, Culture, Religious

BIRDS OF PREY

\$12

JAPANESE GRAIN WHISKY | BANANA SKIN | GALANGAL | LILLET BLANC |  
NEW ORLEANS BITTERS

The Tengu have been seen in a variety of different ways throughout Japanese mythology, sometimes as wild and impetuous creatures and at others heroic figures with god-like traits and avian attributes. Sojobo was the mythical king, god and provider of vast grains and fruits to the Tengu warriors. He would be seen carrying a fan made of seven feathers from the white-tailed eagle of Japan.

THE CROW COLLINS

\$12

BANANA FLOWER | CARIBBEAN RUM | KAFFIR LIME | SODA

Karasu Tengu are believed to have arrived in Japan alongside Buddhism and usually portrayed to have large black wings and beaks, similar to that of a crow. The Karasu are very territorial and mightily protect the forest areas they dwell in. Incredibly skilled with weapons they are trainers of the Samurai warriors of old and it has been written that the first ever banana flower brought to Japan was presented to Oda Nobunaga, head of the powerful Oda clan and an old Samurai warrior trained in warfare by the Karasu.

MOUNTAIN WARRIOR

\$12

TEQUILA | KAFFIR LIME | ORANGE BITTERS | UMESHU | BANANA LEAF | FOAM

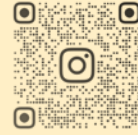
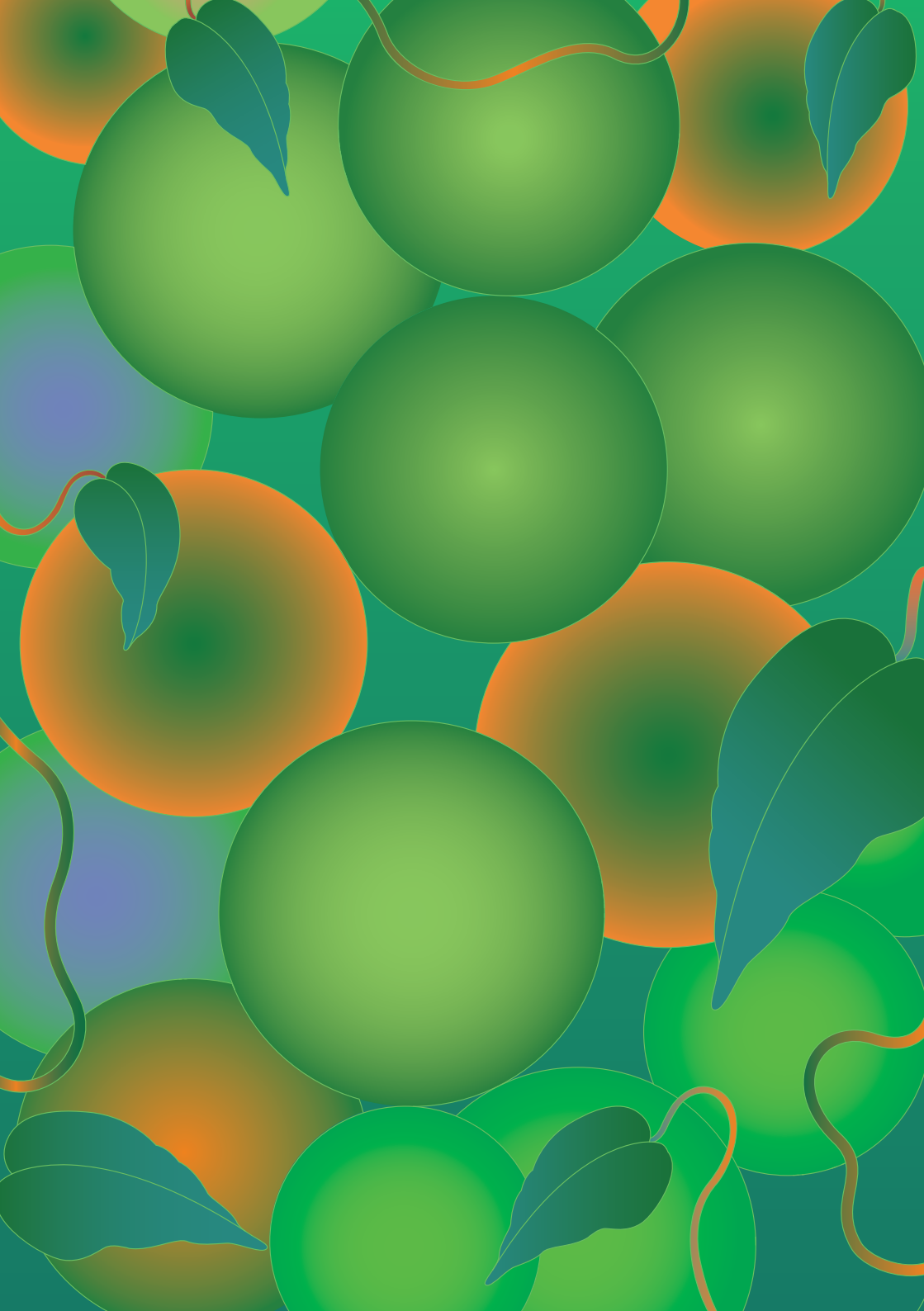
The legend of the Tengu of Mt. Kurama, is one of the most famous of all Tengu stories. It emerged as a medieval story of Minamoto no Yoshitsune, a twelfth century samurai warrior. The Tengu yokai would take the boy under their wing and train him in the form of the greatest martial arts of Japan. The great Tengu of Mt. Kurama sent the Konoha or Banana Leaf Tengu along with Yoshitsune to protect him along his journey through life, protecting him at each and every point.

ZERO HERO BANANA - NON ALC

\$10

BANANA SKIN CORDIAL | KAFFIR LIME | SODA

Some drinks may contain nuts, eggs or gelatin, please check with our associates for any allergies.  
Prices in USD excluding applicable taxes and 7% service charge.



Instagram



Facebook

SORA  
Rosewood Phnom Penh  
3F Vattanac Capital Tower  
66 Monivong Boulevard  
Sangkat Wat Phnom  
Khan Daun Penh  
Phnom Penh 12021  
Kingdom of Cambodia  
TEL. 023 936 860  
[rosewoodhotels.com/en/phnom-penh/dining/sora](https://www.rosewoodhotels.com/en/phnom-penh/dining/sora)  
IG. [sora\\_phnompenh](#)  
FB. [Sora Phnom Penh](#)



