

FLOOR PLANS & CAPACITY GUIDE





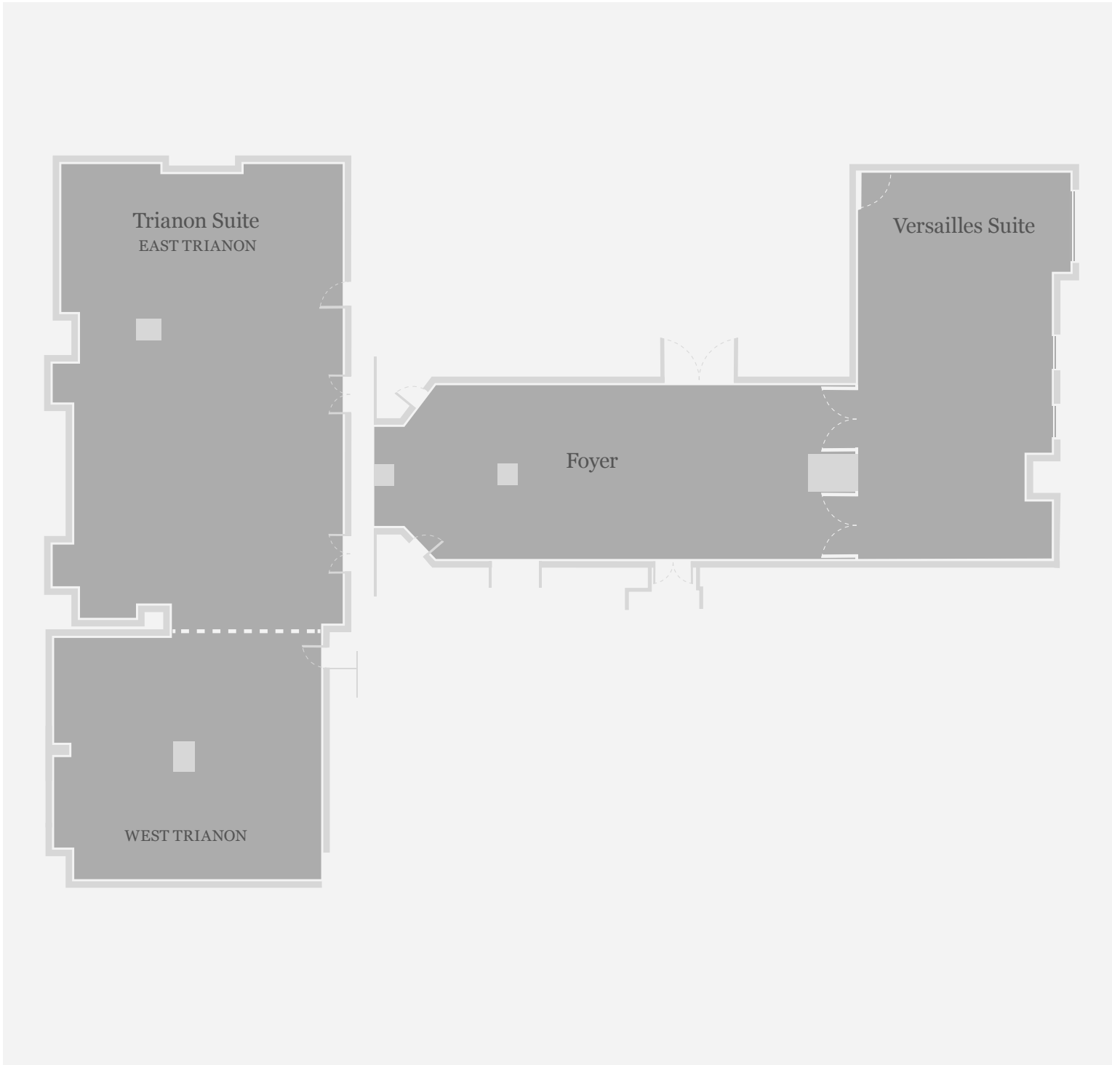
CAPACITY AND DIMENSIONS

	<i>SqFt</i>	<i>Size (Ft)</i>	<i>Ceiling</i>	<i>Reception</i>	<i>Dining</i>	<i>Theatre</i>	<i>Classroom</i>	<i>Conference</i>	<i>U-Shape</i>
East Trianon	1,100	44' x 25'	8' 8"	130	80	115	50	36	30
West Trianon	625	25' x 25'	8' 8"	50	50	25	-	16	-
Trianon Suite	1,725	69' x 25'	8' 8"	225	150	150	70	54	54
Foyer	736	46' x 16'	8' 8"	80	-	-	-	-	-
Versailles Suite	580	29' x 20'	8' 8"	50	40	60	20	20	20
Café Carlyle	988	38' x 26'	8' 8"	100	60	60	-	24	-
The Carlyle Restaurant	1,090	30' x 25'	13'	200	110	-	-	-	-

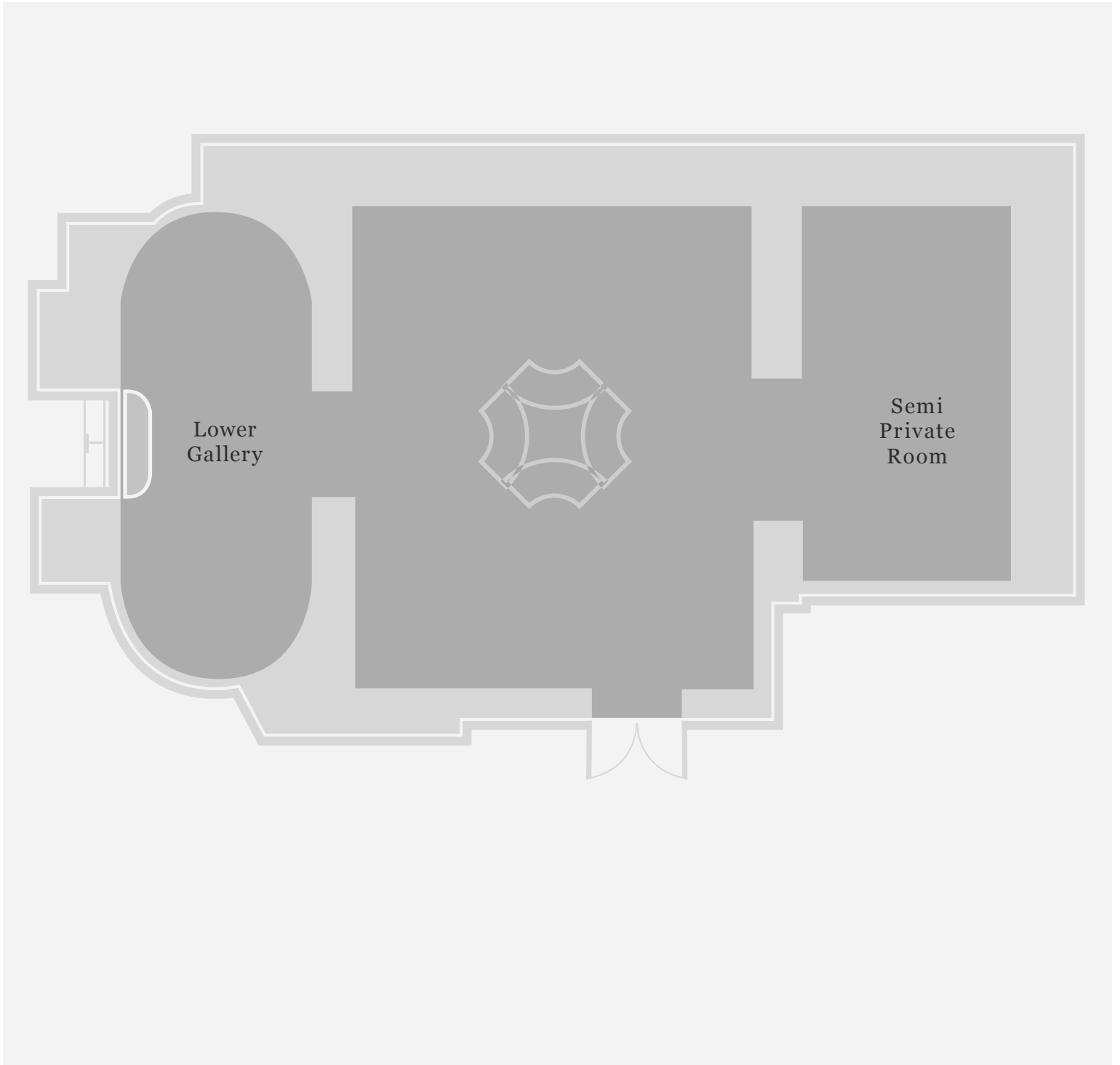
* The Foyer is a common area between the Trianon and Versailles Suites.

** Room capacities do not reflect footage for audio-visual or miscellaneous equipment, entertainment or dancing.

FLOOR PLAN: FOYER



FLOOR PLAN: THE CARLYLE RESTAURANT

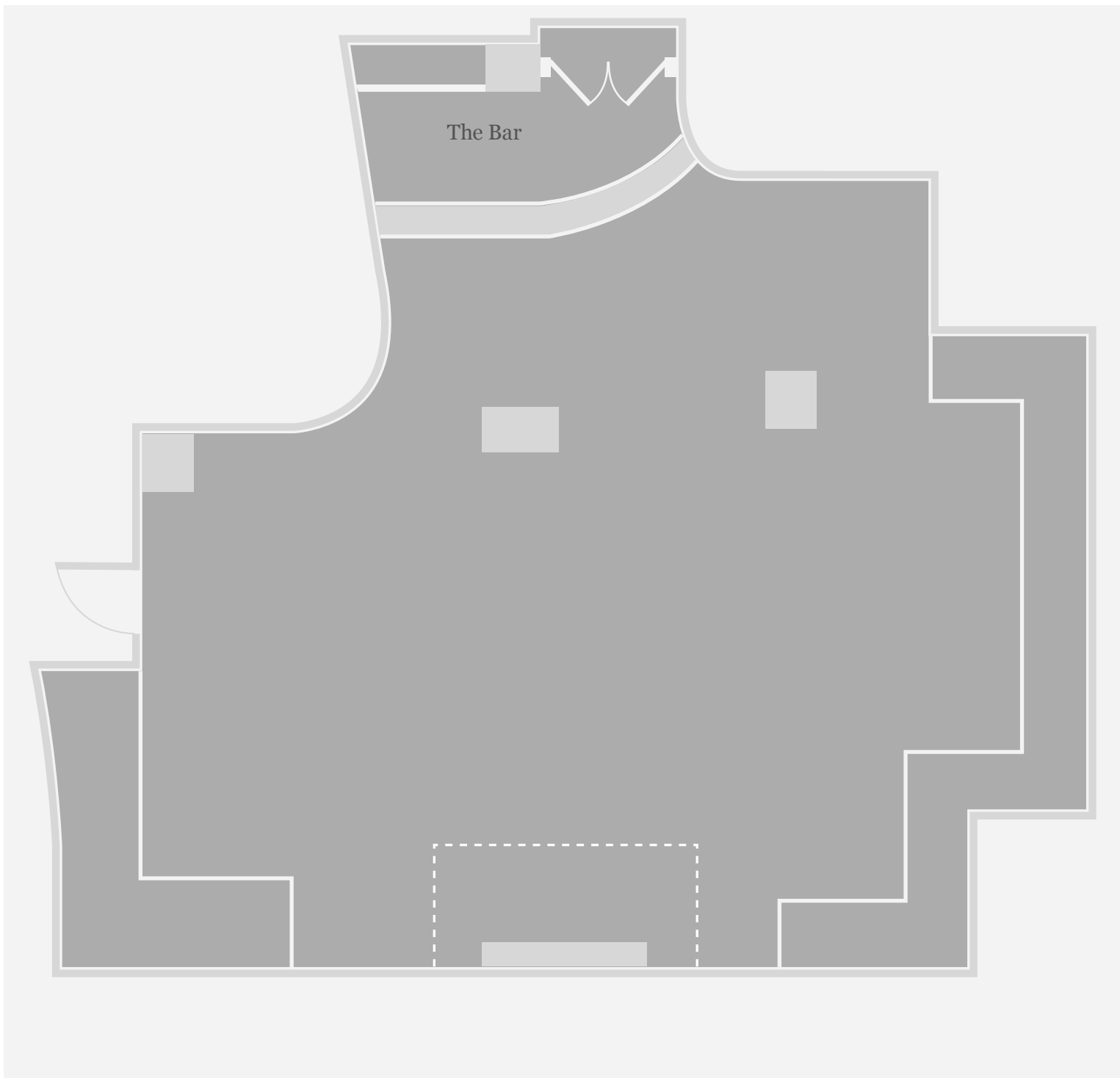




The Carlyle

A ROSEWOOD HOTEL
NEW YORK

FLOOR PLAN: CAFÉ CARLYLE



35 EAST 76TH ST., NEW YORK, NY 10021

T. +1 212.744.1600 E: thecarlyle@rosewoodhotels.com

FLOOR PLAN: BEMELMANS BAR

